



# B.G.S.

INTERNATIONAL PUBLIC SCHOOL

# CALENDAR

OF  
Events

Session- 2025-2026

Service to mankind is service to God

22 YEARS OF EMPOWERING MINDS



## INTRODUCTORY INSTRUCTIONS

FOR THE SESSION 2025-26

With the confidence that the divine blessings of our Founder President **His Holiness Jagadguru Param Poojya Padmabhushana Sri Sri Sri Dr. Balagangadharanatha Mahaswamiji** will guide us at every step, we initiate the new session.

### AN INSIGHT INTO BGSIPS

BGSIPS has steadily climbed the ladder of success through different phases of growth. Now we have reached a point where we are providing meaningful and quality education to students to help them groom their personalities and excel in the fields of their choice.

**Holistic Education** is the main aim of BGSIPS; distinction and diversity are its twin hallmarks. We are committed to the cause of instilling moral, intellectual and social values in our students.

The school which started in the year 2003, has carved a niche for itself in the educational hub of Dwarka. It started with 23 students and is now full upto its capacity, working on the motto, "Service to Mankind is Service to God."

We extend a warm welcome to the parents who have admitted their wards to the BGSIPS family in the session 2025-26. We assure you that your association with us will be fruitful and endearing. We also thank our existing parents for showing faith in us in guiding their wards. It is important that the **parent-teacher relation** is strong and healthy, as moulding a child is a joint responsibility. The student teacher ratio is aptly maintained for effective learning at BGSIPS.

### JOINING DATE :

**The New Session** will begin on 2nd April 2025 for all the classes. The students are to report at 7:50 a.m. For **Level II & III**, the school gets over at 12:30 p.m. and for **Classes I-XII**, at 2:00 p.m.

**Students reporting after 7:50 a.m. will not be allowed to enter the school premises. Self students to enter and exit only through the front gate.**

## INFRASTRUCTURE

The school has grown at a tremendous pace and blossomed into one of the most reputed educational institutions of Dwarka, New Delhi.

The planners of this institution have a clear vision, which is evident from the infrastructure that includes spacious classrooms, sprawling campus, pleasing landscape and eco-friendly environment.

## STANDARD OPERATING PROCEDURE

- 1 **Calendar of Events** is a supplement to the school almanac. The day-to-day schedule is strictly adhered to throughout the session. Changes are strictly limited to unforeseen circumstances only.
- 2 **Saturdays** : All Saturdays are holidays for students. However, the 1st & 3rd Saturdays are working days for teachers, and remedial classes are held for doubt clearing and subject enhancement for students.
- 3 **Activities** : Literary activities are scheduled on Tuesdays, Wednesdays, Thursdays and Fridays for the Preparatory Wing, Foundation Wing, Middle Wing & Senior Wing respectively.
- 4 **Parent Teacher Meetings** are scheduled at regular intervals during the the academic session. It is desirable that both parents attend the PTM's . In case it is not possible for both parents to be present, at least one parent should do so in order to discuss and analyse the performance of their ward(s). **Parents of students from the Foundation Wing can meet the teachers on the 1st and 3rd Saturdays of the month.**
- 5 **Accessibility** : The entire staff of school is accessible to students at any point of time, however trivial the matter may be . We consider it a pleasure to establish and maintain close contact and personal rapport with all our students. However, it is expected that parents are reasonable in their demands and suggestions.
- 6 **Communication** : There is continuous interaction between the school and parents through circulars and school website. We would like you to visit us as often as you wish, without, of course, interrupting the school functioning. Please feel free to speak to us in case of any query or issue. that requires immediate attention. Communication with school is open through direct lines as well as email.



- 7 **Dress Code** : Students must adhere to the school dress code strictly and we expect the parents to co-operate with us in this regard. House uniform is to be worn on Wednesdays. Summer uniform is worn from 1st April to 31st October, and winter uniform is worn from 1st November to 31st March .
- 8 **Homework** : The school does not believe in burdening children with home tasks. But what the teacher does in the class is to be recapitulated at home meticulously and regularly. This is what we call **the Best Homework**.
- 9 **Remedial Classes** : Special classes are held for students on the 1st & 3rd Saturdays for doubt clearing and subject enhancement.
- 10 **Health Education** : The school organises sessions by various specialists to address problems related to health, hygiene and adolescence. Lectures on first-aid are conducted, and documentaries on health education are shown from time to time.
- 11 **Sports / Coaching** : School makes all necessary arrangements for intra and inter-school sports activities, keeping the health of children in mind, and to make them understand the importance of physical education in the real sense. Specialised training is provided by the school to train students in sports such as Table Tennis, Badminton, Football, Lawn Tennis, Cricket, Skating, Basketball etc. based on their interests. Training in these sports is provided by experienced male and female Physical Education Trainers.
- 12 **Music & Dance** : The school has a well equipped Music Room, with all kinds of musical instruments. Students can avail training in Indian, Western, Vocal and Instrumental Music. Students can learn Indian and Western dance forms from our trained dance teachers .
- 13 **Math Lab** : The School has a fully developed Math Lab with unique and novel methods to help students develop and gain knowledge in numerical skills.
- 14 **Science Labs** : The science laboratories are fully functional, and benefit students with additional audio-visual facilities.

- 15 **Work Experience** : The school has a well-equipped and aesthetically designed Art Room. All work experience activities (SUPW), Craft, Candle Making, Pot Making etc. are taught to students by trained staff members.
- 16 **Leadership cum Orientation Programmes** : Excursions, Trekking, Nature Camps, Value Education, Personality Development Programmes etc. are included in the planner.
- 17 **Birthdays** : Students of Foundation & Preparatory Wings only can wear casual dress on their birthdays. Distribution of “toffees” only is allowed to avoid disparity among students. Indulging in exchange of gifts or partying in the school campus is strictly forbidden. No casual dress is allowed on birthdays for classes VI-XII
- 18 **Library** : The school library offers a wide range of books in fiction and non-fiction categories besides a huge array of books related to subjects within the regular curriculum. We also have a Class Library in each class room, which is maintained by the respective class teacher. Each student is issued a book every Friday to read during the week.
- 19 **Literary Club** : Debates, Elocutions, Extempores, Creative Writing, Quizzes, School News Letters, Calligraphy, Essay Competitions and celebration of festivals are a major part of our curriculum.
- 20 **Career Counselling** : Career counselling sessions are conducted for senior classes. Eminent personalities from different fields are invited to share their views and experiences with the students to motivate and guide them towards their bright future with the right aptitude and attitude.
- 21 **Payment of Fees** : Parents are requested to pay the school fees on time. Late fee of ₹50 per week will be levied if the fee is not paid on the due date which is up to the 10th day of the month, and thereafter, the student’s name will be struck off the rolls. Fine is levied for non compliance of instructions, and no plea of ignorance of the rule is accepted. The link for online fee payment is available on the school website.
- 22 **Information Technology** : Computer education is provided to all the classes. School has also added smart class rooms, as it is rightly said, “One seeing is better than a thousand things said or heard”. Each classroom is equipped with interactive digital screens which facilitate innovative patterns in educative curricula.

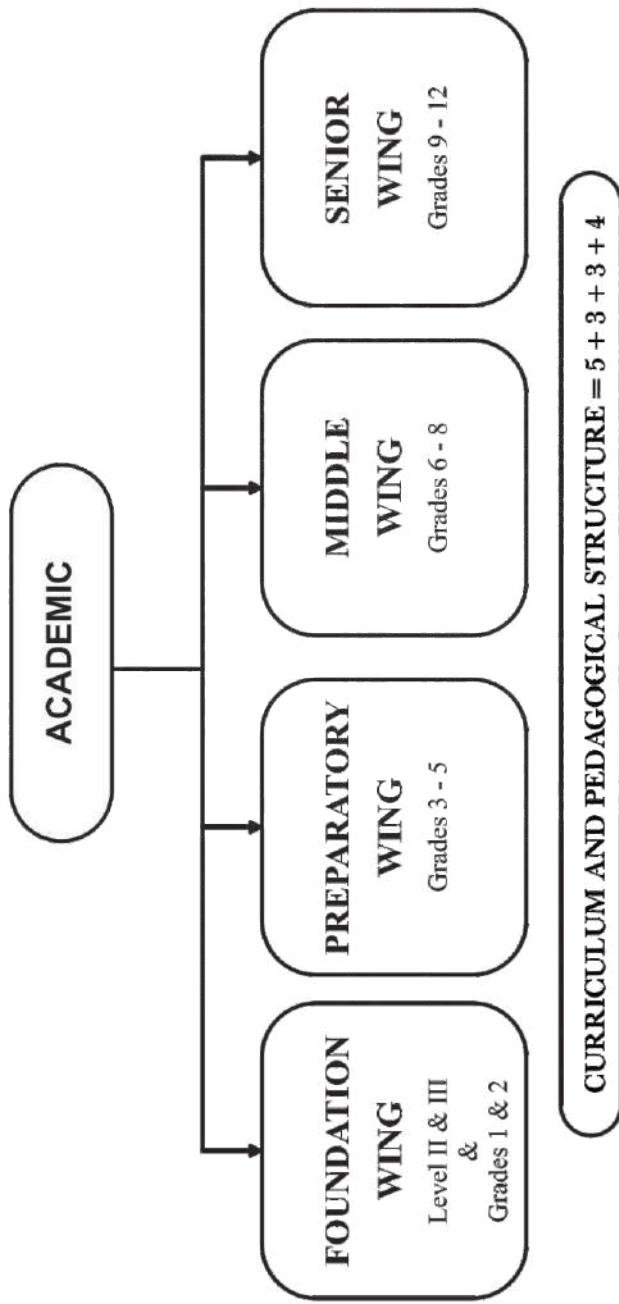
- 23 **Security** : Visitors are requested to comply with the security rules so that proper security and vigilance is maintained. I-cards are compulsory for students and staff. Self students to wear RED TAG, Van students to wear BLUE TAG , Bus students to wear YELLOW TAG. Parents who come to pick up their wards must carry their Parent Cards. No parent is allowed to pick up the child without a gate pass during the school hours.
- 24 **Transportation** : School has an outsourced transport system. Parents must strictly follow the pick-up and drop timings given to them. Parents interested in availing school transport must apply for the same at the beginning of the session, and should deposit the transport fee for the first quarter before the session starts. **Any request** for withdrawal of transport facility during the session shall not be entertained. Parents of newly admitted students shall drop their wards on the first day of the school, and in the afternoon, they will be shown the bus route to help them decide the pick-up and drop points.

**In case the parents choose to opt for private van / self pickup, a written intimation in this regard must be submitted to the school.**

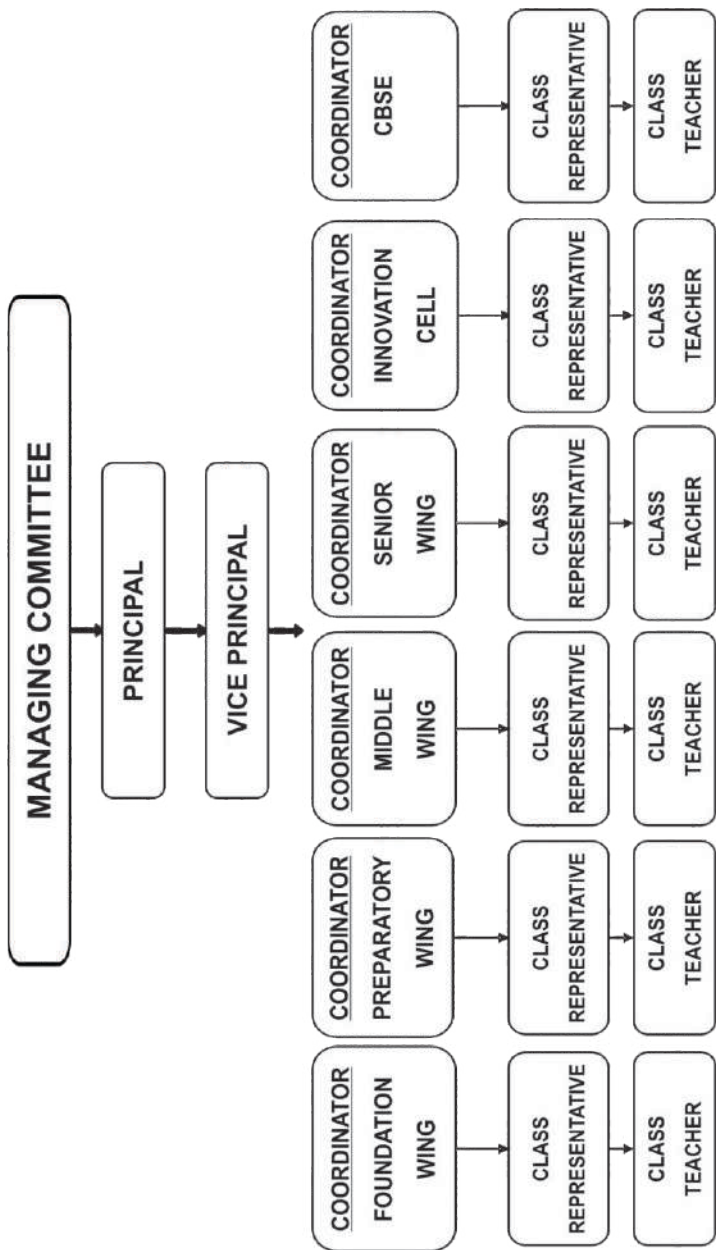
**We would like to reassure the parents that the 'apple of your eye' whom you have entrusted to our care, will be taken care of, with all the love and affection they well-deserve; and that we are fully conscious of what is expected of us in laying a strong foundation, not only for learning to read and write but also for inculcating a healthy, moral value system in them. We expect wholehearted cooperation from parents, guardians and all our well-wishers, to make this happen. Character building is an arduous task, which can only be accomplished with your valuable support and good wishes.**

# SCHOOL STRUCTURE

(AS PER NEP 2020)

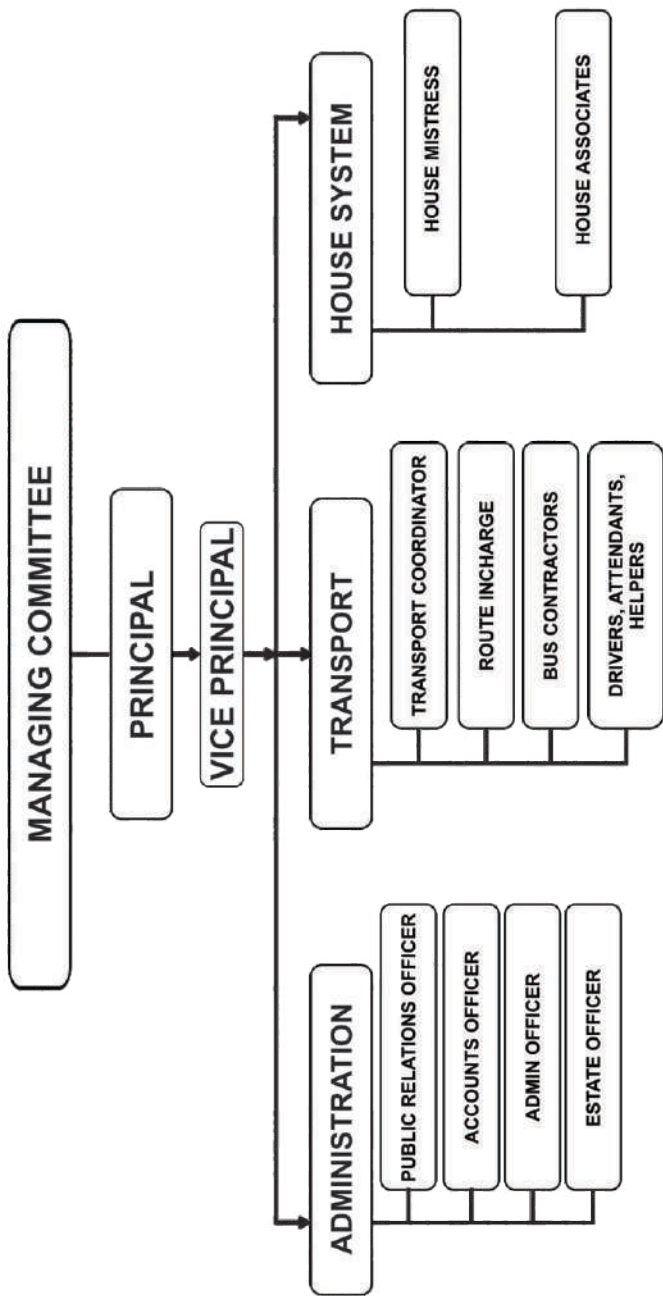


# ACADEMIC FUNCTIONING





# NON ACADEMIC FUNCTIONING





# TEACHERS' TIME TABLE

## SESSION 2025-26

DATE	SUBMISSIONS
26th March	Syllabus to be uploaded
09th May	Classwise summer assignments to be uploaded
01st July	<b>PT I</b> - Two sets of Question Papers with blue print & marking scheme
11th August	<b>PT I</b> - Answer sheets to be handed over to students
25th August	<b>MID TERM</b> - Two sets of Question Papers with blue print & marking scheme
10th October	<b>MID TERM</b> - Answer sheets to be handed over to students
1st November	<b>Mid Term</b> - Report cards & consolidated register for signing
28th November	<b>PT II</b> - Two sets of Question Papers with blue print & marking scheme
13th January	<b>PT II</b> - Answer sheets to be handed over to Class IX to XII students
15th January	<b>PT II</b> - Answer sheets to be handed over to students of Preparatory and Middle wings
15th January	<b>PT II</b> - Report cards & Consolidated Register for signing
01st February	<b>FINAL TERM</b> - Two sets of Question Papers with blue print & marking scheme
20th March	<b>FINAL TERM</b> - Report cards & Consolidated Register for signing

**EXPECTED SCHOLASTIC & CO-SCHOLASTIC OUTCOMES  
FOUNDATION WING**

<b>CLASS</b>	<b>MID TERM TEST</b>	<b>FINAL TERM</b>	<b>EXPECTED LEARNING OUTCOMES</b>
<b>LEVEL II</b>	SYLLABUS-BASED ON LEARNING OUTCOMES	SYLLABUS-BASED ON LEARNING OUTCOMES	TO UNDERSTAND & OBEY SIMPLE DIRECTIONS
	ASSESSMENT I	ASSESSMENT II	TO DEVELOP SENSORY MOTOR SKILLS
	MONTH -SEPTEMBER	MONTH -FEBRUARY	TO DEVELOP LISTENING AND SPEAKING SKILLS
			TO DEVELOP WORK HABITS
			TO DEVELOP IDENTIFICATION AND NUMBER SKILLS
			TO RECITE POEMS & IDENTIFY OBJECTS
			TO DEVELOP SOCIAL SKILLS
			TO INITIATE POSITIVE ATTITUDE
			TO INTRODUCE VISUAL & PERFORMING ARTS
			TO DEVELOP PHYSICAL STRENGTH
		TO DEVELOP STRONG SENSE OF WELL BEING	
		TO MAINTAIN REGULAR ATTENDANCE	

<b>LEVEL III</b>	SYLLABUS-BASED ON LEARNING OUTCOMES	SYLLABUS-BASED ON LEARNING OUTCOMES	TO DEVELOP CONCENTRATION
	ASSESSMENT I	ASSESSMENT II	TO DEVELOP EFFECTIVE COMMUNICATION
	MONTH -SEPTEMBER	MONTH -FEBRUARY	TO BUILD UP VOCABULARY
			TO REINFORCE WRITING & READING SKILLS
			TO DEVELOP NUMBER SKILLS
			TO DEVELOP VISUAL PERCEPTION
			TO INTRODUCE VISUAL & PERFORMING ARTS
			TO DEVELOP HABIT OF INITIATION
			TO BUILD UP PHYSICAL HEALTH
			TO MAINTAIN REGULAR ATTENDANCE

## EXPECTED SCHOLASTIC & CO-SCHOLASTIC OUTCOMES FOUNDATION WING

CLASS	MID TERM TEST	FINAL TERM	EXPECTED LEARNING OUTCOMES
I	SYLLABUS-BASED ON LEARNING OUTCOMES	SYLLABUS-BASED ON LEARNING OUTCOMES	TO MAINTAIN REASONABLE ATTENTION SPAN
	ASSESSMENT I	ASSESSMENT II	TO LEARN TO INTERACT WITH PEERS
	MONTH -SEPTEMBER	MONTH -FEBRUARY	TO DEVELOP COMMUNICATION SKILLS
			TO ENHANCE VOCABULARY
			TO DEVELOP LOGICAL APPLICATION
			TO DEVELOP APPRECIATION OF VISUAL & PERFORMING ARTS
			TO INCULCATE KINDNESS & PATIENCE
			TO DEVELOP CONCEPTS AND GENERAL AWARENESS
			TO OBEY SCHOOL RULES
			INTRODUCTION TO SPORTS & GAMES FOCUS ON HEALTH EDUCATION TO MAINTAIN REGULAR ATTENDANCE

II	SYLLABUS-BASED ON LEARNING OUTCOMES	SYLLABUS-BASED ON LEARNING OUTCOMES	TO INITIATE CREATIVE WRITING
	ASSESSMENT I	ASSESSMENT II	TO INCULCATE READING HABIT
	MONTH -SEPTEMBER	MONTH -FEBRUARY	TO INTRODUCE MENTAL MATH SKILLS
	MM 40		TO INTRODUCE IT SKILLS
			TO BUILD UP VOCABULARY
			TO DEVELOP APPRECIATION OF VISUAL & PERFORMING ARTS
			TO DEVELOP GENERAL AWARENESS
			TO INITIATE ANALYTICAL THINKING & PROBLEM SOLVING
			TO DISPLAY SELF ESTEEM
			TO COMMUNICATE FEELINGS & DESIRES APPROPRIATELY TO PROMOTE PUBLIC SPEAKING TO INSTIL SPIRIT OF SPORTSMANSHIP TO MAINTAIN REGULAR ATTENDANCE

## EXPECTED SCHOLASTIC & CO-SCHOLASTIC OUTCOMES PREPARATORY WING

CLASS	PERIODIC TEST-I	MID TERM TEST	PERIODIC TEST-II	FINAL TERM TEST	EXPECTED LEARNING OUTCOMES
III	SYLLABUS-25% MARKS ALLOTTED-40 TIME ALLOTTED-1.5 Hrs. MONTH -JULY	SYLLABUS-50% MARKS ALLOTTED-40 TIME ALLOTTED-1.5 Hrs. MONTH-SEPTEMBER INTERNAL ASSESSMENT 10 MARKS	SYLLABUS-50% MARKS ALLOTTED-40 TIME ALLOTTED-1.5 Hrs. MONTH-DECEMBER INTERNAL ASSESSMENT 20 MARKS	SYLLABUS-50% MARKS ALLOTTED-80 TIME ALLOTTED-3 Hrs. MONTH -FEBRUARY INTERNAL ASSESSMENT 20 MARKS	TO DEVELOP IT SKILLS TO ENHANCE COMMUNICATION SKILLS TO ENHANCE WRITING SKILLS TO ENHANCE VOCABULARY TO REINFORCE PUBLIC SPEAKING TO DEVELOP MENTAL MATH SKILLS TO DEVELOP GENERAL AWARENESS TO REINFORCE MORAL VALUES TO PARTICIPATE IN VISUAL & PERFORMING ARTS TO INITIATE LEARNING OF SPECIALISED GAME TO MAINTAIN REGULAR ATTENDANCE

IV	SYLLABUS-25% MARKS ALLOTTED-40 TIME ALLOTTED-1.5 Hrs. MONTH -JULY	SYLLABUS-50% MARKS ALLOTTED-80 TIME ALLOTTED-3 Hrs. MONTH-SEPTEMBER INTERNAL ASSESSMENT 20 MARKS	SYLLABUS-50% MARKS ALLOTTED-40 TIME ALLOTTED-1.5 Hrs. MONTH-DECEMBER INTERNAL ASSESSMENT 20 MARKS	SYLLABUS-50% MARKS ALLOTTED-80 TIME ALLOTTED-3 Hrs. MONTH -FEBRUARY INTERNAL ASSESSMENT 20 MARKS	TO DEVELOP IT SKILLS TO ENHANCE LINGUISTIC SKILLS TO ENHANCE SCIENTIFIC TEMPERAMENT TO DEVELOP MATHEMATICAL APPLICATION SKILLS TO CREATE GENERAL AWARENESS TO CREATE INTEREST IN SOCIAL ACTIVITIES TO CREATE VALUE DOMAIN TO PARTICIPATE IN VISUAL & PERFORMING ARTS TO DEVELOP INTEREST IN SPORTS & GAMES TO MAINTAIN REGULAR ATTENDANCE
----	--	---	--	---	--

V	SYLLABUS-25% MARKS ALLOTTED-40 TIME ALLOTTED-1.5 Hrs. MONTH -JULY	SYLLABUS-50% MARKS ALLOTTED-80 TIME ALLOTTED-3 Hrs. MONTH-SEPTEMBER INTERNAL ASSESSMENT 20 MARKS	SYLLABUS-50% MARKS ALLOTTED-40 TIME ALLOTTED-1.5 Hrs. MONTH-DECEMBER INTERNAL ASSESSMENT 20 MARKS	SYLLABUS-50% MARKS ALLOTTED-80 TIME ALLOTTED-3 Hrs. MONTH -FEBRUARY INTERNAL ASSESSMENT 20 MARKS	TO HELP MASTER IT SKILLS TO ESTABLISH LINGUISTIC SKILLS TO HELP MASTER SCIENTIFIC PERCEPTION TO HELP MASTER APPLICATION SKILLS TO DEVELOP SENSITIVITY TOWARDS CULTURE & HERITAGE TO DEVELOP SOCIAL & COMMUNITY SERVICES TO ENHANCE VALUE DOMAIN TO CREATE GENERAL AWARENESS TO BE ABLE TO EXPRESS OPINION TO HELP MASTER CREATIVE VISUALISATION TO PARTICIPATE IN VISUAL & PERFORMING ARTS TO DEVELOP INTEREST IN SPORTS & GAMES TO MAINTAIN REGULAR ATTENDANCE
---	--	---	--	---	---

## EXPECTED SCHOLASTIC & CO-SCHOLASTIC OUTCOMES MIDDLE WING

CLASS	PERIODIC TEST-I	MID TERM TEST	PERIODIC TEST-II	FINAL TERM TEST	EXPECTED LEARNING OUTCOMES
VI	SYLLABUS-40%	SYLLABUS-50%	SYLLABUS-40%	SYLLABUS-100%	TO ENHANCE IT SKILLS
	MARKS ALLOTTED-40	MARKS ALLOTTED-80	MARKS ALLOTTED-40	MARKS ALLOTTED-80	TO ENHANCE READING ABILITY
	TIME ALLOTTED-1.5 Hrs.	TIME ALLOTTED-3Hrs.	TIME ALLOTTED-1.5 Hrs.	TIME ALLOTTED-3Hrs.	TO REINFORCE PUBLIC SPEAKING SKILL
	MONTH -JULY	MONTH-SEPTEMBER	MONTH-DECEMBER	MONTH -FEBRUARY	TO ENHANCE APPRECIATION OF VISUAL & PERFORMING ARTS
		INTERNAL ASSESSMENT		INTERNAL ASSESSMENT	TO DEVELOP SOCIAL & COMMUNITY SERVICES
		20 MARKS		20 MARKS	TO INCULCATE EMPATHY
					TO TRAIN FOR PHYSICAL FITNESS
					TO MAINTAIN REGULAR ATTENDANCE

VII	SYLLABUS-40%	SYLLABUS-50%	SYLLABUS-40%	SYLLABUS-100%	TO DEVELOP ANALYTICAL SKILLS
	MARKS ALLOTTED-40	MARKS ALLOTTED-80	MARKS ALLOTTED-40	MARKS ALLOTTED-80	TO DEVELOP CAPACITY TO INTEGRATE KNOWLEDGE
	TIME ALLOTTED-1.5 Hrs.	TIME ALLOTTED-3Hrs.	TIME ALLOTTED-1.5 Hrs.	TIME ALLOTTED-3Hrs.	TO ENHANCE APPRECIATION OF VISUAL & PERFORMING ARTS
	MONTH -JULY	MONTH-SEPTEMBER	MONTH-DECEMBER	MONTH -FEBRUARY	TO TRAIN FOR DISASTER MANAGEMENT
		INTERNAL ASSESSMENT		INTERNAL ASSESSMENT	TO HELP THEM STRENGTHEN & GROW EMOTIONALLY
		20 MARKS		20 MARKS	TO HELP RECOGNISE ETHICS OF CHOICES & ACTIONS
					TO WORK IN COLLABORATION & DEVELOP TEAM SPIRIT
					TO MAINTAIN REGULAR ATTENDANCE

VIII	SYLLABUS-40%	SYLLABUS-50%	SYLLABUS-40%	SYLLABUS-100%	TO DEVELOP PROBLEM SOLVING STRATEGIES
	MARKS ALLOTTED-40	MARKS ALLOTTED-80	MARKS ALLOTTED-40	MARKS ALLOTTED-80	TO DEVELOP THE ABILITY TO INTEGRATE & APPLY
	TIME ALLOTTED-1.5 Hrs.	TIME ALLOTTED-3Hrs.	TIME ALLOTTED-1.5 Hrs.	TIME ALLOTTED-3Hrs.	TO DEVELOP SCIENTIFIC TEMPERAMENT
	MONTH -JULY	MONTH-SEPTEMBER	MONTH-DECEMBER	MONTH -FEBRUARY	TO ESTABLISH APPRECIATION OF VISUAL & PERFORMING ARTS
		INTERNAL ASSESSMENT		INTERNAL ASSESSMENT	TO DEVELOP CAPACITY TO DESCRIBE & ANALYSE
		20 MARKS		20 MARKS	TO TRAIN FOR DISASTER PREPAREDNESS
					TO MAINTAIN REGULAR ATTENDANCE

## EXPECTED SCHOLASTIC & CO-SCHOLASTIC OUTCOMES SENIOR WING

CLASS	PERIODIC TEST-I	MID TERM TEST	PERIODIC TEST -II	PREBOARDS	FINAL TERM TEST	LEARNING OUTCOMES
IX	SYLLABUS-40%	SYLLABUS-60%	SYLLABUS-40%	N/A	SYLLABUS-100%	TO REINFORCE IT SKILLS
	MARKS ALLOTTED-40	MARKS ALLOTTED-80	MARKS ALLOTTED-40		MARKS ALLOTTED-80	TO PROMOTE PUBLIC SPEAKING SKILL
	TIME ALLOTTED-1.5 Hrs.	TIME ALLOTTED-3Hrs.	TIME ALLOTTED-1.5 Hrs.		TIME ALLOTTED-3Hrs.	TO PROMOTE SOCIAL AND COMMUNITY SERVICES
	MONTH-JULY	MONTH-SEPTEMBER	MONTH-DECEMBER		MONTH-FEBRUARY	TO ENHANCE GENERAL AWARENESS
		INTERNAL ASSESSMENT			INTERNAL ASSESSMENT	TO REINFORCE APPRECIATION OF VISUAL AND PERFORMING ARTS
		20 MARKS			20 MARKS	TO EXCEL IN A CHOSEN GAME
						TO DEVELOP THE CAPACITY TO ANALYSE & EVALUATE
						TO DEVELOP SELF ESTEEM AND SELF CONFIDENCE
						TO MAINTAIN REGULAR ATTENDANCE
X	SYLLABUS-40%	SYLLABUS-60%	SYLLABUS-100%	SYLLABUS-100%	FINAL TERM	TO DEVELOP IT SKILLS
	MARKS ALLOTTED-40	MARKS ALLOTTED-80	MARKS ALLOTTED-80	MARKS ALLOTTED-80	BOARD EXAM	TO ENHANCE PUBLIC SPEAKING SKILLS
	TIME ALLOTTED-1.5 Hrs.	TIME ALLOTTED-3Hrs.	TIME ALLOTTED-3Hrs.	TIME ALLOTTED-3Hrs.	MONTH-MARCH	TO PROMOTE SOCIAL AND COMMUNITY SERVICES
	MONTH-JULY	MONTH-SEPTEMBER	MONTH-DECEMBER	MONTH-JANUARY	MONTH-MARCH	TO ENHANCE GENERAL AWARENESS
		INTERNAL ASSESSMENT		INTERNAL ASSESSMENT		TO DEVELOP COMPETENCY IN VISUAL AND PERFORMING ARTS
		20 MARKS		20 MARKS		TO EXCEL IN A CHOSEN GAME
						TO DEVELOP THE CAPACITY TO ANALYSE & EVALUATE
						TO ESTABLISH SELF ESTEEM & SELF CONFIDENCE
						TO MAINTAIN REGULAR ATTENDANCE
XI	SYLLABUS-40%	SYLLABUS-60%	SYLLABUS-40%	N/A	SYLLABUS-100%	TO EXCEL IN IT SKILLS
	MARKS ALLOTTED-40	MARKS ALLOTTED-70/80	MARKS ALLOTTED-40		MARKS ALLOTTED-70/80	TO EXCEL IN PUBLIC SPEAKING
	TIME ALLOTTED-1.5 Hrs.	TIME ALLOTTED-3Hrs.	TIME ALLOTTED-1.5 Hrs.		TIME ALLOTTED-3Hrs.	TO PARTICIPATE IN SOCIAL AND COMMUNITY SERVICES
	MONTH-JULY	MONTH-SEPTEMBER	MONTH-DECEMBER		MONTH-FEBRUARY	TO ESTABLISH GENERAL AWARENESS
		PRACTICAL/PROJECT			PRACTICAL/PROJECT	TO APPRECIATE VISUAL & PERFORMING ARTS
		30/20 MARKS			30/20 MARKS	TO MASTER A CHOSEN GAME
						TO ESTABLISH SELF ESTEEM & SELF CONFIDENCE
						TO MAINTAIN REGULAR ATTENDANCE
XII	SYLLABUS-40%	SYLLABUS-60%	SYLLABUS-100%	SYLLABUS-100%	FINAL TERM	TO ACHIEVE EXCELLENCE IN IT SKILLS
	MARKS ALLOTTED-40	MARKS ALLOTTED-70/80	MARKS ALLOTTED-70/80	MARKS ALLOTTED-70/80	BOARD EXAM	TO EXCEL IN PUBLIC SPEAKING
	TIME ALLOTTED-1.5 Hrs.	TIME ALLOTTED-3Hrs.	TIME ALLOTTED-3Hrs.	TIME ALLOTTED-3Hrs.	MONTH-MARCH	TO PARTICIPATE IN SOCIAL AND COMMUNITY SERVICES
	MONTH-JULY	MONTH-SEPTEMBER	MONTH-DECEMBER	MONTH - JANUARY	MONTH-MARCH	TO ESTABLISH GENERAL AWARENESS
		PRACTICAL/PROJECT		PRACTICAL/PROJECT		TO DEVELOP COMPETENCY IN VISUAL & PERFORMING ARTS
		30/20 MARKS		30/20 MARKS		TO MASTER A CHOSEN GAME
						TO DEMONSTRATE SELF ESTEEM & SELF CONFIDENCE
						TO MAINTAIN REGULAR ATTENDANCE



## SCHEME OF EVALUATION-2025-26

The Final Assessment of the students will be based on complete syllabus. Parents are requested to strictly keep in mind the examination schedules before planning their vacations.

**Retests will not be conducted in any of the subjects hence forth.**

Best of two periodic tests will be considered for Internal Assessment.

**Scheme of assessment for Preparatory, Middle and Senior wings is given in Appendix 1 and 2 respectively.**

**Assessment Scheme for Classes III to X is as follows:**

### **1. Scholastic Areas**

		<b>Total (100 marks)</b>				
<b>Subjects</b>	<b>80 Marks (Board examination/ Final Term) Student has to secure 33% marks out of 80 marks in each subject</b>	<b>20 Marks (Internal Assessment) Student has to secure 33% marks out of 20 marks in each subject</b>				
		<b>Attendance (3 marks)</b>	<b>Pen Paper Test (5 marks)</b>	<b>Multiple Assessment (4 marks)</b>	<b>Portfolio (4 marks)</b>	<b>Subject Enrichment (4 marks)</b>
<b>Language I</b>	Examination for 80 marks in each subject covering 100% syllabus of the subject.  Both Marks and Grades will be awarded for Individual subjects.  9-point grading will be followed same as in Class XII	Attendance will have weightage.	Periodic Written Test, restricted to three in each subject in an academic year.  Average of the best two tests will be taken for final marks submission	Strategies to be used (Quizzes, Oral Test, Concept Map, Exit Cards, Visual Expression etc.)	Class Work Plus Peer Assessment, Achievements of Student in the Subject, Ref lections, Narrations, Journals etc.	Speaking and Listening skills
<b>Language II</b>						Speaking and Listening skills
<b>Science</b>						Practical Lab Work
<b>Mathematics</b>						Math Lab Project
<b>Social Science</b>						Map and Project Work

**( i ) Attendance ( 3 marks ) :**

Minimum attendance is mandatory to appear in exams.

**( ii ) Pen Paper Test (5marks) :**

The school will conduct three periodic written tests in the entire academic year and the average of the best two will be taken .The school has the autonomy to make its own schedule. However, for the purpose of gradient learning, three tests may be held as one being the mid term test and the other two being pre mid and post mid term with portion of syllabus cumulatively covered. The gradually increasing portions of content would prepare students and help them gain confidence for appearing in board examination with 100 % syllabus. The school will take the average of the best two tests for final marks submission.

**( iii ) Multiple Assessment (4 marks) :**

Subject teacher would use different strategies such as quiz, oral test, concept mapping, visual expressions etc. for assessing students.

**( iv ) Portfolio (4 marks) :**

Notebook submission as a part of internal assessment is aimed at ensuring seriousness of students towards preparing notes for the topics taught in the classroom as well as assignments. This also addresses the critical aspect of regularity, punctuality, neatness and notebook upkeep, peer assessment, achievements of students in the subject, reflections, narrations, journals etc.

**( v ) Subject Enrichment Activities (4 marks) :**

These are subject specific application activities aimed at enhancing the understanding of subject and skill development. These activities are to be recorded internally by the respective subject teachers.

**For Languages :**

Activities conducted for subject enrichment in languages should aim at equipping the learner to develop effective speaking and listening skills.

**For Mathematics :**

The listed laboratory activities and projects as given in the prescribed publications of CBSE / NCERT may be followed.

**For Science :**

The listed practical work / activities will be carried out as prescribed by the CBSE in the curriculum.

**For Social Science :**

Map and project work will be undertaken as prescribed by the CBSE in the curriculum.

## **2. Co- Scholastic Activities :**

School promotes co - curricular activities for the holistic development of the students. These activities are graded on a 5-point grading scale (A to E) and will have no descriptive indicators.

<b>Activity</b>	<b>To be graded on a 5-point scale (A-E) in school</b>	<b>Areas and Objectives (as prescribed in the Scheme of Studies for Subjects of Internal Assessment)</b>
<b>Work Education or Pre- Vocational Education</b>	By the concerned Teacher	It is a distinct curricular area for students for participation in social, economic and welfare activities. Student gets a sense of community service and develops self reliance.
<b>Art Education</b>	By the VA/PA or the concerned Teacher	Art Education constitutes an important area of curricular activity for development of wholesome personality of the students. Students will select one or more forms of creative arts.
<b>Health &amp; Physical Education</b>	By PE Teacher	Health and Physical education preferably sports must be given a regular period. Students should be provided opportunities to get professionally trained in the area of their interest. Indigenous sports, yoga and NCC must be encouraged in the schools, creating a sense of physical fitness, discipline, sportsmanship, patriotism, self - sacrifice and health care.

## **2. Discipline (Attendance, Sincerity, Behaviour & Values) :**

Discipline significantly impacts career shaping and it helps build character, sincerity, good behaviour and values develop strength and foster unity and co-operation. Therefore, the element of discipline has been introduced. The class teacher is responsible for student grades on a Five Point Scale (A to E)

The internal assessment comprising 20 Marks (3+5+4+4+4) entails objectivity and a structured approach. For a holistic assessment, the teachers are expected to make it an effective tool.

## SCHEME OF EVALUATION FOR CLASSES XI AND XII (2025-26)

### 1. Scholastic areas

Total 100 Marks		
Subjects	Theory	Practical/ Internal Assessment
English, Mathematics, Applied Math	80 marks	20 marks
Economics, Political Science, Sociology, Business Studies, Accountancy	80 marks	20 marks
Physics, Chemistry, Biology, Computer Science, Informatics Practices, Psychology, Physical Education	70 marks	30 marks
	Examination for said marks in each subject covering 100 % syllabus . Marks would be awarded for individual subjects. 9 point grading will be followed as per CBSE	Examination for listed practical or project work as per CBSE

### 2. Co-Scholastic Areas

School will promote co- scholastic activities for the holistic development of the student. These activities will be graded on a 5 point grading scale (A to E) and will have no descriptive indicators.

Activity	To be graded on a 5 point scale (A to E) in school	Areas and objectives (as prescribed in the scheme of Studies for subjects of Internal Assessment)
Work Education	By the concerned teacher	It is a distinct area for students for participation in social , economic and welfare activities. Student gets a sense of community service and develops self reliance.
Health and Physical Education	By PE teacher	Health and Physical Education preferably sports must be given a regular period. Students should be provided opportunities to get professionally trained in the area of their interest. Indigeneous sports , Yoga and NCC must be encouraged in the schools creating a sense of physical fitness , discipline, sportsmanship, patriotism, self sacrifice and health care.
General Studies	By concerned teacher	It is an area where general awareness of student is tested.

# DETAILS OF PERIODIC TESTS AND EXAMINATION SCHEDULE

**PERIODIC TEST I**

**SESSION 2025-26**

**JULY (2025)**

DAY & DATE	SUBJECT CLASS III	SUBJECT CLASS IV	SUBJECT CLASS V	SUBJECT CLASS VI	SUBJECT CLASS VII	SUBJECT CLASS VIII	SUBJECT CLASS IX	SUBJECT CLASS X	SUBJECT CLASS XI	SUBJECT CLASS XII
THU 24/07/2025	ENGLISH	HINDI	MATH	SCIENCE	MATH	SOCIAL SCIENCE	SOCIAL SCIENCE	SCIENCE	CHEM / B.STD. / SOCIOLOGY	MATHS / AM/ IP/ PSY
FRI 25/07/2025	MATH	EVS	ENGLISH	HINDI	ENGLISH	III LANGUAGE	HINDI/ SANS/ FRENCH	ENGLISH	ENGLISH	ENGLISH
MON 28/07/2025	EVS	MATH	EVS	SOCIAL SCIENCE	SCIENCE	MATH	SCIENCE	MATH	MATHS /AM/ IP/ PSY	PHY / ACCOUNTS / POL. Scl.
TUE 29/07/2025	HINDI	ENGLISH	HINDI	III LANGUAGE	HINDI	ENGLISH	ENGLISH	HINDI/ SANS/ FRENCH	CS /BIO/ ECO	PE/ SANS.
WED 30/07/2025	WORKING DAY	WORKING DAY	WORKING DAY	ENGLISH	III LANGUAGE	HINDI	MATH	SOCIAL SCIENCE	PHY / ACCOUNTS / POL. Scl.	CHEM / B.STD. / SOCIOLOGY
THU 31/07/2025	WORKING DAY	WORKING DAY	WORKING DAY	MATH	SOCIAL SCIENCE	SCIENCE	WORKING DAY	WORKING DAY	PE/ ENT	CS /BIO/ECO/ ENT

**Note: PT I**

- 1) PT-I will be conducted in zero period .
- 2) Answer sheets will be given to students on 11th August 2025 (Monday).

# DETAILS OF PERIODIC TESTS AND EXAMINATION SCHEDULE

**MID TERM**

**SESSION 2025-26**

**SEPTEMBER (2025)**

Day & Date	Subject Class III	Subject Class IV	Subject Class V	Subject Class VI	Subject Class VII	Subject Class VIII	Subject Class IX	Subject Class X	Subject Class XI	Subject Class XII
MON 15/09/2025	PREP LEAVE	PREP LEAVE	PREP LEAVE	MATH	SOCIAL SCIENCE	SCIENCE	MATH	SOCIAL SCIENCE	MATHS/AM /IP/ PSY	PHY/ACC. /POL. Sci
TUE 16/09/2025	MATH	EVS	ENGLISH	PREP LEAVE	PREP LEAVE	PREP LEAVE	PREP LEAVE	PREP LEAVE	PREP LEAVE	PREP LEAVE
WED 17/09/2025	PREP LEAVE	PREP LEAVE	PREP LEAVE	III LANGUAGE	HINDI	ENGLISH	ENGLISH	HINDI/ SANS/ FRENCH	CS/ BIO/ ECO	ENGLISH
THU 18/09/2025	ENGLISH	HINDI	MATH	PREP LEAVE	PREP LEAVE	PREP LEAVE	PREP LEAVE	PREP LEAVE	PREP LEAVE	PREP LEAVE
FRI 19/09/2025	PREP LEAVE	PREP LEAVE	PREP LEAVE	SCIENCE	MATH	SOCIAL SCIENCE	SCIENCE	ENGLISH	ENGLISH	PE/ SANS.
MON 22/09/2025	PREP LEAVE	PREP LEAVE	PREP LEAVE	SOCIAL SCIENCE	SCIENCE	MATH	SOCIAL SCIENCE	MATH	PHY/ACC. /POL. Sci	CHEM/BSST SOCIO
TUE 23/09/2025	EVS	MATH	EVS	PREP LEAVE	PREP LEAVE	PREP LEAVE	PREP LEAVE	PREP LEAVE	PREP LEAVE	PREP LEAVE
WED 24/09/2025	PREP LEAVE	PREP LEAVE	PREP LEAVE	ENGLISH	III LANGUAGE	HINDI	HINDI/ SANS/ FRENCH	SCIENCE	PE/ ENT	CS/ BIO/ ECO/ ENT
THU 25/09/2025	HINDI	ENGLISH	HINDI	PREP LEAVE	PREP LEAVE	PREP LEAVE	PREP LEAVE	PREP LEAVE	PREP LEAVE	PREP LEAVE
FRI 26/09/2025	WORKING DAY	WORKING DAY	WORKING DAY	HINDI	ENGLISH	III LANGUAGE	IT	COMP. APPL.	CHEM/BSST SOCIO	MATHS/AM /IP/ PSY

**Note: MID TERM**

- 1) Skill Subject 1 examination will be held on 03/09/2025 (Wednesday).
- 2) Art/Skill Subject 2 examination will be held on 08/09/2025 (Monday).
- 3) GK examination will be held on 10/09/2025 (Wednesday).
- 4) Practical exams of Computers, Science, Art & Music, will be conducted during regular classes. Dates will be intimated through diary note.
- 5) Buses will ply at normal school timings in the morning & roll out at 12:15 p.m. after the examination.
- 6) Answer sheets will be given to students on 10/10/2025 (Friday).



# DETAILS OF PERIODIC TESTS AND EXAMINATION SCHEDULE

**PERIODIC TEST II / PREBOARD-I**

SESSION 2025-26

**DECEMBER (2025)**

Day & Date	Subject Class III	Subject Class IV	Subject Class V	Subject Class VI	Subject Class VII	Subject Class VIII	Subject Class IX	Subject Class X	Subject Class XI	Subject Class XII
WED 17/12/2025	WORKING DAY	WORKING DAY	WORKING DAY	WORKING DAY	WORKING DAY	WORKING DAY	WORKING DAY	SCIENCE	WORKING DAY	CHEM/BST SOCIO
THU 18/12/2025	EVS	EVS	MATH	HINDI	ENGLISH	III LANGUAGE	HINDI/ SANSKRIT/ FRENCH	PREP LEAVE	MATHS/AM IP/PSY	PREP LEAVE
FRI 19/12/2025	HINDI	ENGLISH	HINDI	SOCIAL SCIENCE	SCIENCE	MATH	SOCIAL SCIENCE	ENGLISH	ENGLISH	ENGLISH
MON 22/12/2025	MATH	MATH	EVS	MATH	SOCIAL SCIENCE	SCIENCE	SCIENCE	PREP LEAVE	CS/BIO/ECO	PREP LEAVE
TUE 23/12/2025	ENGLISH	HINDI	ENGLISH	III LANGUAGE	HINDI	ENGLISH	ENGLISH	MATH	PE/ENT	PHY/ACC. / POL. Sci
WED 24/12/2025	WORKING DAY	WORKING DAY	WORKING DAY	WORKING DAY	WORKING DAY	WORKING DAY	WORKING DAY	PREP LEAVE	WORKING DAY	PREP LEAVE
FRI 26/12/2025	WORKING DAY	WORKING DAY	WORKING DAY	SCIENCE	MATH	SOCIAL SCIENCE	MATH	SOCIAL SCIENCE	CHEM/BST SOCIO	MATHS/AM IP/PSY
MON 29/12/2025	WORKING DAY	WORKING DAY	WORKING DAY	ENGLISH	III LANGUAGE	HINDI	WORKING DAY	HINDI/ SANSKRIT/ FRENCH	PHY/ACC. / POL. Sci	CS/BIO/ ECO/ENT
TUE 30/12/2025	WORKING DAY	WORKING DAY	WORKING DAY	WORKING DAY	WORKING DAY	WORKING DAY	WORKING DAY	WORKING DAY	WORKING DAY	PE/ SANS.

**Note: PT II**

- 1) Board Practical Examinations of Science for class X will be conducted in the first week of December.
- 2) Periodic Test II are the Preboard I Examination for Classes X and XII.
- 3) It will be half working day during PT II examination. Buses will ply at normal school timings in the morning and roll out at 12:15 pm.
- 4) Answer sheets will be given to students of classes IX to XII on 12/11/2026 (Monday) and to students of classes III to VIII on 16/01/2026 (Friday).

## PRE BOARD II

SESSION 2025-26

<b>JANUARY 2026</b>		
	<b>CLASS X</b>	<b>CLASS XII</b>
<b>Day &amp; Date</b>	<b>SUBJECT</b>	<b>SUBJECT</b>
<b>FRI 16/01/2026</b>	MATH	PHY/ ACCOUNTS/ POL.SCI.
<b>MON 19/01/2026</b>	SCIENCE	CHEM/ B.STD. / SOCIOLOGY
<b>WED 21/01/2026</b>	ENGLISH	ENGLISH
<b>FRI 23/01/2026</b>	HINDI/ SANSKRIT/ FRENCH	MATH/ AM / IP/ PSY
<b>TUE 27/01/2026</b>	SOCIAL SCIENCE	PE
<b>FRI 30/01/2026</b>		CS/ BIO/ ECO/ ENT

# DETAILS OF PERIODIC TESTS AND EXAMINATION SCHEDULE

## SESSION 2025-26

### FEBRUARY (2026)

#### FINAL TERM

Day & Date	Subject Class III	Subject Class IV	Subject Class V	Subject Class VI	Subject Class VII	Subject Class VIII	Subject Class IX	Subject Class XI
TUE 24/02/2026	WORKING DAY	WORKING DAY	WORKING DAY	MATH	SOCIAL SCIENCE	SCIENCE	SOCIAL SCIENCE	CHEM/B. ST. SOCIOLOGY
THU 26/02/2026	HINDI	ENGLISH	MATH	PREP. LEAVE	PREP. LEAVE	PREP. LEAVE	PREP. LEAVE	PREP. LEAVE
FRI 27/03/2026	PREP. LEAVE	PREP. LEAVE	PREP. LEAVE	SCIENCE	MATH	SOCIAL SCIENCE	ENGLISH	MATHS/AM/ IP/ PSY
MON 2/03/2026	PREP. LEAVE	PREP. LEAVE	PREP. LEAVE	SOCIAL SCIENCE	HINDI	ENGLISH	MATH	PHY/ACC. / POL. Sci
TUE 3/03/2026	EVS	MATH	EVS	PREP. LEAVE	PREP. LEAVE	PREP. LEAVE	PREP. LEAVE	PREP. LEAVE
FRI 6/03/2026	MATH	EVS	ENGLISH	ENGLISH	SCIENCE	MATH	HINDI/ SANSKRIT/ FRENCH	ENGLISH
MON 9/03/2026	PREP. LEAVE	PREP. LEAVE	PREP. LEAVE	HINDI	ENGLISH	HINDI	SCIENCE	CS/BIO/ ECO
TUE 10/03/2026	ENGLISH	HINDI	HINDI	PREP. LEAVE	PREP. LEAVE	PREP. LEAVE	PREP. LEAVE	PREP. LEAVE
WED 11/03/2026	HOLIDAY	HOLIDAY	HOLIDAY	LANGUAGE	LANGUAGE	LANGUAGE	I.T.	PE
FRI 13/03/2026	HOLIDAY	HOLIDAY	HOLIDAY	HOLIDAY	HOLIDAY	HOLIDAY	HOLIDAY	ENT

#### Note: FINAL TERM

- 23/02/2026 & 24/02/2026 will be teaching days and 25/02/2026 will be Preparatory leave for class II to V.
- Art / Skill Subject 1 examination for class VI to IX will be held on 13/02/2026 (Friday).
- GK examination will be held on 16/02/2026 (Monday).
- Skill Subject 2 examination will be held on 18/02/2026 (Wednesday)
- Practical exams of Computers, Science, Art & Music will be conducted during their regular classes. Dates will be intimated through diary note.
- Buses will ply at normal school timings in the morning & roll out at 12:15 p.m. after the examination.

TUE	1	<b>WORKING DAY FOR TEACHERS</b>
WED	2	<b>TD - NEW SESSION COMMENCES</b>
THU	3	<b>TD - STAR SEARCH</b>
FRI	4	<b>TD - SPEAK YOUR MIND</b>
SAT	5	<b>REMEDIAL TEACHING</b>
SUN	6	<b>HOLIDAY - RAM NAVAMI</b>
MON	7	<b>TD</b>
TUE	8	<b>TD - HERITAGE HUNT</b>
WED	9	<b>TD - MY HAND IMPRESSIONS</b>
THU	10	<b>HOLIDAY - MAHAVIR JAYANTI</b>
FRI	11	<b>HOLIDAY</b>
SAT	12	<b>HOLIDAY - SECOND SATURDAY</b>
SUN	13	<b>HOLIDAY</b>
MON	14	<b>TD</b>
TUE	15	<b>TD - WOVEN WONDERS</b>
WED	16	<b>TD - WORKSHOP ON DINING TABLE ETIQUETTE</b>
THU	17	<b>TD - BAGLESS DAY</b>
FRI	18	<b>HOLIDAY - GOOD FRIDAY</b>
SAT	19	<b>REMEDIAL TEACHING</b>
SUN	20	<b>HOLIDAY</b>
MON	21	<b>TD</b>
TUE	22	<b>TD - SPECIAL ASSEMBLY (CLASS IV) ON EARTH DAY / GREEN-A-THON</b>
WED	23	<b>TD - BAGLESS DAY</b>
THU	24	<b>TD - THE GREEN PATH</b>
FRI	25	<b>TD - REUSABLE BAG DESIGN</b>
SAT	26	<b>REMEDIAL TEACHING</b>
SUN	27	<b>HOLIDAY</b>
MON	28	<b>TD</b>
TUE	29	<b>TD - BAGLESS DAY</b>
WED	30	<b>TD - OUR LIFELINES</b>

**Working Days**

**22**

**Wednesday Activities are for Level-II to Class-II.**

**NATIONAL & INTERNATIONAL DAYS**

SAT	5	National Maritime Day
MON	7	World No Smoking Day
MON	14	Fire Service Day
MON	14	Ambedkar Jayanti
FRI	18	World Heritage Day
TUE	22	Earth Day

**Tuesday Activities are for Classes III to V.**

**Thursday Activities are for Classes VI to VIII.**

**Friday Activities are for Classes IX to XII.**

**Sports Activities (Matches) will be organised on monthly basis.**

*Please Note : Holidays are subject to change as per Govt. notifications.*

**MAY 2025**

<b>THU</b>	1	TD - <b>ENERGETIC CIRCLE / SPECIAL ASSEMBLY BY CLASS X</b>
<b>FRI</b>	2	TD - <b>BRAINIAC BATTLE</b>
<b>SAT</b>	3	<b>LIVE WIRE - INTER SCHOOL EVENT</b>
<b>SUN</b>	4	<b>HOLIDAY</b>
<b>MON</b>	5	TD
<b>TUE</b>	6	TD - <b>BAGLESS DAY</b>
<b>WED</b>	7	TD - <b>BAGLESS DAY</b>
<b>THU</b>	8	TD - <b>BAGLESS DAY</b>
<b>FRI</b>	9	TD - <b>TARK VITARK</b>
<b>SAT</b>	10	<b>PTM - I</b>
<b>SUN</b>	11	<b>HOLIDAY</b>
<b>MON</b>	12	<b>HOLIDAY - BUDDH PURNIMA</b>
<b>TUE</b>	13	TD - <b>KAVYA TARANG</b>
<b>WED</b>	14	TD - <b>FRUIT BONANZA</b>
<b>THU</b>	15	TD - <b>ENGLISH EXTEMPORE</b>
<b>FRI</b>	16	TD - <b>TECH TALK</b>
<b>SAT</b>	17	<b>Summer Vacation commences For Level-II to Class VIII / WD FOR TEACHERS</b>
<b>SUN</b>	18	<b>HOLIDAY</b>
<b>MON</b>	19	TD
<b>TUE</b>	20	TD
<b>WED</b>	21	<b>SUMMER VACATION COMMENCES FOR CLASS IX TO XII</b>
<b>THU</b>	22	
<b>FRI</b>	23	
<b>SAT</b>	24	
<b>SUN</b>	25	
<b>MON</b>	26	
<b>TUE</b>	27	
<b>WED</b>	28	
<b>THU</b>	29	
<b>FRI</b>	30	
<b>SAT</b>	31	

**V  
A  
C  
A  
T  
I  
O  
N**

**S  
U  
M  
M  
E  
R**

<b>Working Days</b>	<b>16</b>	<b>Wednesday Activities are for Level-II to Class-II.</b>
<b>NATIONAL &amp; INTERNATIONAL DAYS</b>		<b>Tuesday Activities are for Classes III to V.</b>
		<b>Thursday Activities are for Classes VI to VIII.</b>
		<b>Friday Activities are for Classes IX to XII.</b>
		<b>Sports Activities (Matches) will be organised on monthly basis.</b>
<b>THU</b>	1	<b>Worker's Day</b>
<b>THU</b>	8	<b>Red Cross Day</b>
<b>TUE</b>	13	<b>National Solidarity Day</b>
<b>THU</b>	15	<b>International Day of the Family</b>
<b>SAT</b>	17	<b>World Communication Day</b>
<b>WED</b>	21	<b>Anti Terrorism day</b>
<b>FRI</b>	30	<b>World No Tobacco Day</b>

*Please Note : Holidays are subject to change as per Govt. notifications.*

SUN	1
MON	2
TUE	3
WED	4
THU	5
FRI	6
SAT	7
SUN	8
MON	9
TUE	10
WED	11
THU	12
FRI	13
SAT	14
SUN	15
MON	16
TUE	17
WED	18
THU	19
FRI	20
SAT	21
SUN	22
MON	23
TUE	24
WED	25
THU	26
FRI	27
SAT	28
SUN	29
MON	30

**S  
U  
M  
M  
E  
R**

**V  
A  
C  
A  
T  
I  
O  
N**

23 TD - SCHOOL REOPENS FOR IX TO XII  
 24 TD - TEACHER ENHANCEMENT PROGRAMME  
 25 TD - TEACHER ENHANCEMENT PROGRAMME  
 26 TD - TEACHER ENHANCEMENT PROGRAMME  
 27 TD - TEACHER ENHANCEMENT PROGRAMME  
 28 HOLIDAY - FOURTH SATURDAY  
 29 HOLIDAY  
 30 TD

**Working Days**

**06**

**NATIONAL & INTERNATIONAL DAYS**

THU 5 World Environment Day

Wednesday Activities are for Level-II to Class-II.

Tuesday Activities are for Classes III to V.

Thursday Activities are for Classes VI to VIII.

Friday Activities are for Classes IX to XII.

Sports Activities (Matches) will be organised on monthly basis.

*Please Note : Holidays are subject to change as per Govt. notifications.*



TUE	1	TD - SCHOOL REOPENS FOR LEVEL II TO CLASS VIII
WED	2	TD - STROKES AND CURVES
THU	3	TD - WORKSHOP ON FINANCIAL LITERACY
FRI	4	TD - INVESTITURE CEREMONY
SAT	5	REMEDIAL TEACHING
SUN	6	HOLIDAY
MON	7	TD
TUE	8	TD - TRASH TO TREASURE
WED	9	TD - FUN WITH COLOURS (ART GALORE)
THU	10	TD - PROJECT EXPLORER
FRI	11	TD - PROJECT MOMENTUM
SAT	12	HOLIDAY - SECOND SATURDAY
SUN	13	HOLIDAY
MON	14	TD
TUE	15	TD - BAGLESS DAY
WED	16	TD - BAGLESS DAY
THU	17	TD - BAGLESS DAY
FRI	18	TD - ONLINE CLASSES FOR LEVEL II TO CLASS VIII /HWD FOR CLASSES IX TO XII
SAT	19	PROJECT EXHIBITION- L' EXPOSITION
SUN	20	HOLIDAY
MON	21	TD - SPECIAL ASSEMBLY BY CLASS III (CLEAN WATER AND SANITATION)
TUE	22	TD - FACT FRENZY
WED	23	TD - CHYME A RHYME
THU	24	TD - PT 1 COMMENCES
FRI	25	TD
SAT	26	HOLIDAY - FOURTH SATURDAY
SUN	27	HOLIDAY
MON	28	TD
TUE	29	TD
WED	30	TD - HEALTH FIRST
THU	31	TD

**Working Days**

**25**

Wednesday Activities are for Level-II to Class-II.

**NATIONAL & INTERNATIONAL DAYS**

FRI	11	World Population Day
SAT	26	Kargil Vijay Diwas
SAT	26	World Family Day

Tuesday Activities are for Classes III to V.

Thursday Activities are for Classes VI to VIII.

Friday Activities are for Classes IX to XII.

Sports Activities (Matches) will be organised on monthly basis.

*Please Note : Holidays are subject to change as per Govt. notifications.*

<b>FRI</b>	1	TD
<b>SAT</b>	2	<b>MODEL UNITED NATIONS (INTER SCHOOL EVENT)</b>
<b>SUN</b>	3	<b>HOLIDAY</b>
<b>MON</b>	4	TD
<b>TUE</b>	5	TD - <b>MIND BENDERS</b>
<b>WED</b>	6	TD - <b>SUR SANGAM</b>
<b>THU</b>	7	TD - <b>VOICE OF PATRIOTISM</b>
<b>FRI</b>	8	TD - <b>MARKETING MINGLE</b>
<b>SAT</b>	9	<b>HOLIDAY - RAKSHABANDHAN</b>
<b>SUN</b>	10	<b>HOLIDAY</b>
<b>MON</b>	11	TD
<b>TUE</b>	12	TD - <b>PERSONA PORTRAITS</b>
<b>WED</b>	13	TD - <b>CHARACTER DEPICTION</b>
<b>THU</b>	14	TD - <b>SPECIAL ASSEMBLY BY CLASS V (PATRIOTISM)/ MIND TEASER</b>
<b>FRI</b>	15	<b>HOLIDAY - INDEPENDENCE DAY/ HWD FOR TEACHERS</b>
<b>SAT</b>	16	<b>HOLIDAY - JANMASHTAMI</b>
<b>SUN</b>	17	<b>HOLIDAY</b>
<b>MON</b>	18	TD
<b>TUE</b>	19	TD - <b>WORDLESS WONDERS</b>
<b>WED</b>	20	TD - <b>HERITAGE QUIZ</b>
<b>THU</b>	21	TD - <b>GOLDEN AGER</b>
<b>FRI</b>	22	TD - <b>MORAL DILEMMA</b>
<b>SAT</b>	23	<b>HOLIDAY- FOURTH SATURDAY</b>
<b>SUN</b>	24	<b>HOLIDAY</b>
<b>MON</b>	25	TD
<b>TUE</b>	26	TD - <b>BAGLESS DAY</b>
<b>WED</b>	27	TD - <b>BAGLESS DAY</b>
<b>THU</b>	28	TD - <b>BAGLESS DAY</b>
<b>FRI</b>	29	TD - <b>INTERHOUSE BASKETBALL TOURNAMENT</b>
<b>SAT</b>	30	<b>PTM - II</b>
<b>SUN</b>	31	<b>HOLIDAY</b>

**Working Days**

**22**

**Wednesday Activities are for Level-II to Class-II.**

**NATIONAL & INTERNATIONAL DAYS**

<b>WED</b>	6	Hiroshima Day
<b>FRI</b>	8	Senior Citizen Day
<b>SAT</b>	9	Nagasaki Day / Quit India Day
<b>FRI</b>	15	Independence Day
<b>WED</b>	20	Sadbhavana Day
<b>FRI</b>	29	National Sports Day

**Tuesday Activities are for Classes III to V.**

**Thursday Activities are for Classes VI to VIII.**

**Friday Activities are for Classes IX to XII.**

**Sports Activities (Matches) will be organised on monthly basis.**

*Please Note : Holidays are subject to change as per Govt. notifications.*

**SEPTEMBER 2025**

MON	1	TD
TUE	2	TD - MATHEMAGIC
WED	3	TD - SHOW AND TELL
THU	4	TD - BAGLESS DAY
FRI	5	HOLIDAY - EID-E-MILAD
SAT	6	TEACHERS' DAY CELEBRATIONS (CLASS XI AND XII)
SUN	7	HOLIDAY
MON	8	TD
TUE	9	TD - BAGLESS DAY
WED	10	TD - BAGLESS DAY
THU	11	TD
FRI	12	TD
SAT	13	HOLIDAY - SECOND SATURDAY
SUN	14	HOLIDAY
MON	15	TD - MID-TERM EXAMINATION COMMENCES
TUE	16	TD
WED	17	TD - SCIENTIFIC PERCEPTIONS
THU	18	TD
FRI	19	TD
SAT	20	REMEDIAL TEACHING
SUN	21	HOLIDAY
MON	22	TD
TUE	23	TD
WED	24	TD - THEATRE WORKSHOP
THU	25	TD
FRI	26	TD - MID-TERM EXAMINATION CONCLUDES
SAT	27	TD
SUN	28	HOLIDAY
MON	29	TD - HONOURS' DAY PRACTICE COMMENCES
TUE	30	TD

**Working Days**      24

**NATIONAL & INTERNATIONAL DAYS**

FRI	5	Teachers' Day
MON	8	International Literary Day
TUE	16	World Ozone Day
FRI	26	Day of the Deaf
SAT	27	World Tourism Day

Wednesday Activities are for Level-II to Class-II.

Tuesday Activities are for Classes III to V.

Thursday Activities are for Classes VI to VIII.

Friday Activities are for Classes IX to XII.

Sports Activities (Matches) will be organised on monthly basis.

*Please Note : Holidays are subject to change as per Govt. notifications.*

**OCTOBER 2025**

<b>WED</b>	1	<b>HOLIDAY - NAVMI</b>
<b>THU</b>	2	<b>HOLIDAY - DUSSEHRA/ GANDHI JAYANTI</b>
<b>FRI</b>	3	TD
<b>SAT</b>	4	TD
<b>SUN</b>	5	<b>HOLIDAY</b>
<b>MON</b>	6	TD
<b>TUE</b>	7	<b>HOLIDAY - VALMIKI JAYANTI</b>
<b>WED</b>	8	TD - <b>MYTHOLOGY SAGA</b>
<b>THU</b>	9	TD
<b>FRI</b>	10	TD
<b>SAT</b>	11	TD
<b>SUN</b>	12	<b>HOLIDAY</b>
<b>MON</b>	13	TD
<b>TUE</b>	14	TD
<b>WED</b>	15	TD - <b>CANDLE MAKING</b>
<b>THU</b>	16	TD
<b>FRI</b>	17	TD - <b>GRAND REHEARSAL</b>
<b>SAT</b>	18	<b>HONOURS' DAY (BAGLESS DAY)</b>
<b>SUN</b>	19	<b>HOLIDAY - RETURN OF COSTUMES</b>
<b>MON</b>	20	<b>HOLIDAY - DIWALI</b>
<b>TUE</b>	21	<b>HOLIDAY</b>
<b>WED</b>	22	<b>GOWARDHAN PUJA</b>
<b>THU</b>	23	<b>BHAI DOOJ</b>
<b>FRI</b>	24	<b>HOLIDAY</b>
<b>SAT</b>	25	<b>HOLIDAY - FOURTH SATURDAY</b>
<b>SUN</b>	26	<b>HOLIDAY</b>
<b>MON</b>	27	<b>HOLIDAY - CHHATH PUJA</b>
<b>TUE</b>	28	TD - <b>MYTHIC MELODIES</b>
<b>WED</b>	29	TD - <b>VISIT TO QUTUB MINAR / BAGLESS DAY</b>
<b>THU</b>	30	TD - <b>ATHLETIC MEET / BAGLESS DAY</b>
<b>FRI</b>	31	TD - <b>ATHLETIC MEET</b>

**Working Days**

17

Wednesday Activities are for Level-II to Class-II.

**NATIONAL & INTERNATIONAL DAYS**

SAT	4	World Animal Day
SUN	5	World Habitat Day
WED	8	Air Force Day/ World Elder's Day
THU	9	Territorial Army Day/ World Post Day
FRI	10	National Post Day
MON	13	National Disaster Reduction Day
TUE	14	World standards Day
THU	16	World Food Day
FRI	24	United Nations Day
THU	30	World Thrift Day
FRI	31	National Integration Day

Tuesday Activities are for Classes III to V.

Thursday Activities are for Classes VI to VIII.

Friday Activities are for Classes IX to XII.

Sports Activities (Matches) will be organised on monthly basis.

*Please Note : Holidays are subject to change as per Govt. notifications.*

**NOVEMBER 2025**

SAT	1	<b>REMEDIAL TEACHING</b>
SUN	2	<b>HOLIDAY</b>
MON	3	TD - <b>SPECIAL ASSEMBLY BY CLASS VIII (PEACE JUSTICE AND STRONG INSTITUTIONS)</b>
TUE	4	TD - <b>BAGLESS DAY</b>
<b>WED</b>	5	<b>HOLIDAY - GURU NANAK JAYANTI</b>
THU	6	TD - <b>INTER HOUSE FOOTBALL MATCH</b>
FRI	7	TD - <b>INTER HOUSE FOOTBALL MATCH</b>
SAT	8	<b>PTM-3</b>
SUN	9	<b>HOLIDAY</b>
MON	10	TD
TUE	11	TD - <b>FUN ON WHEELS</b>
<b>WED</b>	12	TD - <b>DAY WITH BAKER</b>
THU	13	TD - <b>LEADERSHIP CUM ORIENTATION CAMP</b>
FRI	14	TD
SAT	15	<b>REMEDIAL TEACHING / BAGLESS DAY FOR PREPARATORY WING</b>
SUN	16	<b>HOLIDAY</b>
MON	17	TD - <b>SPECIAL ASSEMBLY BY CLASS VII (GOOD HEALTH AND WELL BEING)</b>
TUE	18	TD - <b>INTER HOUSE YOGA</b>
<b>WED</b>	19	TD - <b>SPIN A YARN</b>
THU	20	TD - <b>INTER HOUSE BASKETBALL MATCH</b>
FRI	21	TD - <b>MATH CRANK</b>
SAT	22	<b>HOLIDAY - FOURTH SATURDAY</b>
SUN	23	<b>HOLIDAY</b>
MON	24	TD
TUE	25	TD - <b>GIRLS LEAGUE CHALLENGE</b>
<b>WED</b>	26	TD - <b>BAGLESS DAY</b>
THU	27	TD - <b>BAGLESS DAY</b>
FRI	28	TD - <b>INTER HOUSE CRICKET MATCH</b>
SAT	29	<b>STAFF PICNIC</b>
SUN	30	<b>HOLIDAY</b>

<b>Working Days</b>	<b>23</b>	<b>Wednesday Activities are for Level-II to Class-II.</b>
<b>NATIONAL &amp; INTERNATIONAL DAYS</b>		<b>Tuesday Activities are for Classes III to V.</b>
		<b>Thursday Activities are for Classes VI to VIII.</b>
		<b>Friday Activities are for Classes IX to XII.</b>
		<b>Sports Activities (Matches) will be organised on monthly basis.</b>

*Please Note : Holidays are subject to change as per Govt. notifications.*

**DECEMBER 2025**

<b>MON</b>	1	TD
<b>TUE</b>	2	TD - <b>PREPSTERS' DAY / BAGLESS DAY</b>
<b>WED</b>	3	TD - <b>MATHEPHILIA</b>
<b>THU</b>	4	TD - <b>MINI FOOTBALL TOURNAMENT / SHLOKA CHANTING</b>
<b>FRI</b>	5	TD - <b>MINI FOOTBALL TOURNAMENT</b>
<b>SAT</b>	6	<b>REMEDIAL TEACHING</b>
<b>SUN</b>	7	<b>HOLIDAY</b>
<b>MON</b>	8	TD
<b>TUE</b>	9	TD - <b>RHYTHM AND RHYME</b>
<b>WED</b>	10	TD - <b>YOGA SE HOGA</b>
<b>THU</b>	11	TD - <b>SPECIAL ASSEMBLY BY CLASS VI (SELF RELIANT INDIA)/ BAGLESS DAY</b>
<b>FRI</b>	12	TD
<b>SAT</b>	13	<b>HOLIDAY - SECOND SATURDAY</b>
<b>SUN</b>	14	<b>HOLIDAY</b>
<b>MON</b>	15	TD
<b>TUE</b>	16	TD
<b>WED</b>	17	TD - <b>ATHLETIC MEET / PREBOARD / PT-II COMMENCES</b>
<b>THU</b>	18	TD
<b>FRI</b>	19	TD
<b>SAT</b>	20	<b>REMEDIAL TEACHING</b>
<b>SUN</b>	21	<b>HOLIDAY</b>
<b>MON</b>	22	TD
<b>TUE</b>	23	TD - <b>NUMBER NINJA CHALLENGE</b>
<b>WED</b>	24	TD - <b>BAGLESS DAY/ CHRISTMAS CELEBRATIONS</b>
<b>THU</b>	25	<b>HOLIDAY - CHRISTMAS</b>
<b>FRI</b>	26	TD
<b>SAT</b>	27	<b>HOLIDAY - FOURTH SATURDAY</b>
<b>SUN</b>	28	<b>HOLIDAY</b>
<b>MON</b>	29	TD
<b>TUE</b>	30	TD - <b>PREBOARD / PT-II CONCLUDES</b>
<b>WED</b>	31	<b>WINTER VACATION COMMENCES/ WORKING DAY FOR TEACHERS</b>

<b>Working Days</b>	<b>24</b>	<b>Wednesday Activities are for Level-II to Class-II.</b>
<b>NATIONAL &amp; INTERNATIONAL DAYS</b>		<b>Tuesday Activities are for Classes III to V.</b>
<b>MON</b>	1 World AIDS Day	<b>Thursday Activities are for Classes VI to VIII.</b>
<b>WED</b>	3 World Disability Day	
<b>FRI</b>	5 Navy Day/ International Volunteers' Day	<b>Friday Activities are for Classes IX to XII.</b>
<b>SUN</b>	7 Flag Day	
<b>WED</b>	10 UN Human Rights Day	<b>Sports Activities (Matches) will be organised on monthly basis.</b>
<b>TUE</b>	23 Kisan Day	
<b>THU</b>	25 Christmas	
<b>WED</b>	31 New Year Eve	

*Please Note : Holidays are subject to change as per Govt. notifications.*

<b>THU</b>	1	<b>HOLIDAY</b>
<b>FRI</b>	2	<b>HOLIDAY</b>
<b>SAT</b>	3	<b>HOLIDAY</b>
<b>SUN</b>	4	<b>HOLIDAY</b>
<b>MON</b>	5	<b>HOLIDAY</b>
<b>TUE</b>	6	<b>HOLIDAY</b>
<b>WED</b>	7	<b>HOLIDAY</b>
<b>THU</b>	8	<b>HOLIDAY</b>
<b>FRI</b>	9	<b>HOLIDAY</b>
<b>SAT</b>	10	<b>HOLIDAY</b>
<b>SUN</b>	11	<b>HOLIDAY</b>
<b>MON</b>	12	<b>TD - SCHOOL REOPENS FOR IX TO XII</b>
<b>TUE</b>	13	<b>TD</b>
<b>WED</b>	14	<b>HOLIDAY - MAKAR SANKRANTI</b>
<b>THU</b>	15	<b>TD</b>
<b>FRI</b>	16	<b>TD - SCHOOL REOPENS FOR L-II TO CLASS VIII / CHORD BATTLE</b>
<b>SAT</b>	17	<b>REMEDIAL TEACHING</b>
<b>SUN</b>	18	<b>HOLIDAY</b>
<b>MON</b>	19	<b>TD</b>
<b>TUE</b>	20	<b>TD - SPINNING TALES</b>
<b>WED</b>	21	<b>TD - BAGLESS DAY</b>
<b>THU</b>	22	<b>TD - INTER HOUSE CRICKET MATCH</b>
<b>FRI</b>	23	<b>TD - WORKSHOP ON SELF DISCIPLINE</b>
<b>SAT</b>	24	<b>HOLIDAY - FOURTH SATURDAY</b>
<b>SUN</b>	25	<b>HOLIDAY</b>
<b>MON</b>	26	<b>REPUBLIC DAY- HOLIDAY</b>
<b>TUE</b>	27	<b>TD - HASYA TARANG</b>
<b>WED</b>	28	<b>TD - BLOOM AND BLOSSOM</b>
<b>THU</b>	29	<b>TD - BAGLESS DAY</b>
<b>FRI</b>	30	<b>TD - EACH ONE TEACH ONE</b>
<b>SAT</b>	31	<b>REMEDIAL TEACHING</b>

<b>Working Days</b>	<b>15</b>	<b>Wednesday Activities are for Level-II to Class-II.</b>
<b>NATIONAL &amp; INTERNATIONAL DAYS</b>		<b>Tuesday Activities are for Classes III to V.</b>
<b>THU</b>	1 <b>New Year Day</b>	<b>Thursday Activities are for Classes VI to VIII.</b>
<b>MON</b>	12 <b>National Youth Day</b>	<b>Friday Activities are for Classes IX to XII.</b>
<b>THU</b>	15 <b>Army Day</b>	<b>Sports Activities (Matches) will be organised on monthly basis.</b>
<b>MON</b>	26 <b>Republic Day</b>	
<b>MON</b>	26 <b>International Customs Day</b>	
<b>FRI</b>	30 <b>Martyrs' day</b>	

*Please Note : Holidays are subject to change as per Govt. notifications.*

<b>SUN</b>	1	<b>HOLIDAY</b>
<b>MON</b>	2	<b>TD</b>
<b>TUE</b>	3	<b>TD - SPECIAL ASSEMBLY BY CLASS IX (GENDER EQUALITY)</b>
<b>WED</b>	4	<b>TD - PRACTICE FOR GRADUATION DAY BEGINS</b>
<b>THU</b>	5	<b>TD - INTER-HOUSE INDIGENOUS GAMES</b>
<b>FRI</b>	6	<b>TD - VALUE DOMAIN</b>
<b>SAT</b>	7	<b>FOND REVERIE</b>
<b>SUN</b>	8	<b>HOLIDAY</b>
<b>MON</b>	9	<b>TD</b>
<b>TUE</b>	10	<b>TD - BAGLESS DAY</b>
<b>WED</b>	11	<b>TD</b>
<b>THU</b>	12	<b>TD - EPIC TALES TRIVIA</b>
<b>FRI</b>	13	<b>TD</b>
<b>SAT</b>	14	<b>PARENTS VS STUDENTS MATCH</b>
<b>SUN</b>	15	<b>HOLIDAY - MAHA SHIVRATRI</b>
<b>MON</b>	16	<b>TD</b>
<b>TUE</b>	17	<b>TD - LINGUSTICS QUIZ</b>
<b>WED</b>	18	<b>TD</b>
<b>THU</b>	19	<b>TD - EXIT JAR</b>
<b>FRI</b>	20	<b>TD - EXIT NOTE</b>
<b>SAT</b>	21	<b>REMEDIAL TEACHING</b>
<b>SUN</b>	22	<b>HOLIDAY</b>
<b>MON</b>	23	<b>TD</b>
<b>TUE</b>	24	<b>TD - FINAL EXAMINATION COMMENCES</b>
<b>WED</b>	25	<b>TD</b>
<b>THU</b>	26	<b>TD</b>
<b>FRI</b>	27	<b>TD</b>
<b>SAT</b>	28	<b>HOLIDAY - FOURTH SATURDAY</b>

**Working Days**      23

**NATIONAL & INTERNATIONAL DAYS**

<b>SUN</b>	1	Indian Coast Guard Day
<b>TUE</b>	24	Central Excise Day
<b>SAT</b>	28	National Science Day

Wednesday Activities are for Level-II to Class-II.

Tuesday Activities are for Classes III to V.

Thursday Activities are for Classes VI to VIII.

Friday Activities are for Classes IX to XII.

Sports Activities (Matches) will be organised on monthly basis.

*Please Note : Holidays are subject to change as per Govt. notifications.*



<b>SUN</b>	1	<b>HOLIDAY</b>
<b>MON</b>	2	<b>TD</b>
<b>TUE</b>	3	<b>TD</b>
<b>WED</b>	4	<b>HOLIDAY - HOLI</b>
<b>THU</b>	5	<b>TD</b>
<b>FRI</b>	6	<b>TD</b>
<b>SAT</b>	7	<b>REMEDIAL TEACHING</b>
<b>SUN</b>	8	<b>HOLIDAY</b>
<b>MON</b>	9	<b>TD</b>
<b>TUE</b>	10	<b>TD</b>
<b>WED</b>	11	<b>TD</b>
<b>THU</b>	12	<b>TD</b>
<b>FRI</b>	13	<b>TD - FINAL EXAMINATION CONCLUDES</b>
<b>SAT</b>	14	<b>GRADUATION DAY</b>
<b>SUN</b>	15	<b>HOLIDAY</b>
<b>MON</b>	16	<b>ORIENTATION DAY / NEW SESSION COMMENCES FOR CLASSES X AND XII</b>
<b>TUE</b>	17	<b>TD</b>
<b>WED</b>	18	<b>TD</b>
<b>THU</b>	19	<b>TD</b>
<b>FRI</b>	20	<b>INTRODUCTION DAY FOR NEW STUDENTS</b>
<b>SAT</b>	21	<b>HOLIDAY - EID-UL-FITR</b>
<b>SUN</b>	22	<b>HOLIDAY</b>
<b>MON</b>	23	<b>TD</b>
<b>TUE</b>	24	<b>TD</b>
<b>WED</b>	25	<b>FOCUS ON ACHIEVEMENT / SKILL FAIR</b>
<b>THU</b>	26	<b>HOLIDAY - RAM NAVAMI</b>
<b>FRI</b>	27	<b>HOLIDAY</b>
<b>SAT</b>	28	<b>HOLIDAY - FOURTH SATURDAY</b>
<b>SUN</b>	29	<b>HOLIDAY</b>
<b>MON</b>	30	<b>WORKING DAY FOR TEACHERS</b>
<b>TUE</b>	31	<b>HOLIDAY - MAHAVIR JAYANTI</b>

<b>Working Days</b>	<b>20</b>	<b>Wednesday Activities are for Level-II to Class-II.</b>
<b>NATIONAL &amp; INTERNATIONAL DAYS</b>		<b>Tuesday Activities are for Classes III to V.</b>
<b>WED</b>	4 National Safety Day	<b>Thursday Activities are for Classes VI to VIII.</b>
<b>SUN</b>	8 International Women's Day	
<b>TUE</b>	10 Ramakrishna Paramahansa Jayanti	<b>Friday Activities are for Classes IX to XII.</b>
<b>WED</b>	18 World Disabled Day	
<b>SAT</b>	21 World Forestry day	<b>Sports Activities (Matches) will be organised on monthly basis.</b>
<b>SAT</b>	21 Elimination of Racial Discrimination Day	
<b>SUN</b>	22 World Water Day	

*Please Note : Holidays are subject to change as per Govt. notifications.*





**BGS INTERNATIONAL PUBLIC SCHOOL**

**Sector-5, Dwarka, New Delhi-110075**

**Tel.: 011-45629822 | 45629833 | 45622601**

**E-mail : [bgsips2003@yahoo.com](mailto:bgsips2003@yahoo.com)**

**Web site : [www.bgsips.net](http://www.bgsips.net)**