



B.G.S.

INTERNATIONAL PUBLIC SCHOOL

CALENDAR

OF
Events

Session- 2024-2025

Service to mankind is service to God

21 YEARS OF EMPOWERING MINDS

INTRODUCTORY INSTRUCTIONS

FOR THE SESSION 2024-25

With the confidence that the divine blessings of our Founder President **His Holiness Jagadguru Parama Poojya Padmabhushana Sri Sri Sri Dr. Balagangadharanatha Mahaswamiji** will guide us at every step, we initiate the new session.

AN INSIGHT INTO BGSIPS

BGSIPS has steadily climbed the ladder of success through different phases of growth, Now we have reached a point where we are providing meaningful and quality education to students to help them groom their personalities and excel in the fields of their choice.

Holistic education is the main aim of BGSIPS; distinction and diversity are its twin hallmarks. We are committed to the cause of instilling moral, intellectual and social values in our students.

The school which started in the year 2003, has carved a niche for itself in the educational hub of Dwarka. It started with 23 students and is now full upto its capacity, working on the motto, "Service to Mankind is Service to God."

We extend a warm welcome to the parents who have admitted their wards to the BGSIPS family in the session 2024-25. We assure you that your association with us will be fruitful and endearing. We also thank our existing parents for bestowing their faith on us in guiding their wards. It is important that the **parent-teacher relation** is strong and healthy, as moulding the child is a joint responsibility. The student teacher ratio has been aptly maintained for effective learning.

JOINING DATE :

The New Session will begin on 1st **April 2024** for all the classes. The students are to report at 7:50 a.m. For **Level II & III**, the school gets over at 12:30 p.m and for **Class I-XII**, at 2:00 p.m.

Students reporting after 7:50 a.m. will not be allowed to enter the school premises. Self students to enter and exit only through the front gate.

INFRASTRUCTURE

The school has grown at a tremendous pace and blossomed into one of the most reputed educational institutions of Dwarka, New Delhi.

The planners of this institution have a clear vision, which is evident from the infrastructure being developed including spacious classrooms, sprawling campus, pleasing landscape and eco-friendly environment.

STANDARD OPERATING PROCEDURE

- 1 **Calendar of Events** is a supplement to the school diary. The day-to-day schedule is strictly adhered to throughout the session. Changes are strictly limited to unforeseen circumstances only.
- 2 **Saturdays** : All Saturdays are holidays for students. However, the 1st & 3rd Saturdays are working days for teachers. Remedial classes are held for doubt clearing and subject enhancement for students.
- 3 **Activity** : Literary activities are scheduled on Tuesdays, Wednesdays, Thursdays and Fridays for the Preparatory Wing, Foundation Wing, Middle Wing & Senior Wing respectively.
- 4 **Parent Teacher Meetings** are scheduled at regular intervals during the the academic session. It is desirable that both parents attend the PTM's . In case it is not possible for both the parents to be present, at least one parent should do so in order to discuss and analyse the performance of their ward(s). **Parents of students from the Foundation Wing can meet the teachers on the 1st and 3rd Saturdays of the month.**
- 5 **Accessibility** : The entire staff of school is accessible to students at any point of time, however trivial the matter may be . We consider it a pleasure to maintain establish close contact and personal rapport with all our students. However, it is expected that parents are reasonable in their demands and suggestions.
- 6 **Communication** : There is continuous interaction between the school and parents through circulars and school website. We would like you to visit us as often as you wish, without, of course, interrupting the school functioning. Please feel free to speak to us in case of any misunderstanding. Communication with the school is open through direct lines as well as email.

- 7 **Dress Code** : Students should adhere to the school dress code strictly and we expect the parents to co-operate with us in this regard. House uniform is to be worn on Wednesdays. Summer uniform is worn from 1st April to 31st October, and winter uniform is worn from 1st November to 31st March .
- 8 **Homework** : The school does not believe in burdening children with home tasks. But what the teacher does in the class is to be recapitulated at home meticulously and regularly. This is what we call as **the Best Homework**.
- 9 **Remedial Classes** : Special classes are held for students on the 1st & 3rd Saturdays for doubt clearing and subject enhancement.
- 10 **Health Education** : The School organises sessions by various specialists to address problems related to health, hygiene and adolescence. First-aid lectures are conducted and documentaries on health education are shown from time to time.
- 11 **Sports / Coaching** : School makes all necessary arrangements for intra and inter-school sports activities, keeping the health of the children in mind and to make them understand the importance of physical education in the real sense. Specialised Training is provided by the school to train students in sports such as Table Tennis, Badminton, Football, Lawn Tennis, Cricket, Skating, Basketball etc. based on their interests. Training in these sports is provided by experienced male and female Physical Education Trainers.
- 12 **Music & Dance** : The school has a well equipped Music room, with all kinds of musical instruments. Students can avail training in Indian, Western, Vocal and Instrumental Music. Students can learn Indian and Western dance forms from our trained dance teachers .
- 13 **Math Lab** : The School has a fully developed Math Lab with unique and novel methods to help students develop and gain knowledge in their numerical skills.
- 14 **Science Labs** : The science laboratories are fully functional, and benefit the students with additional audio-visual facilities.

- 15 **Work Experience** : The school has a well-equipped and aesthetically planned Art Room. All work experience activities (SUPW), Craft, Candle Making, Pot Making etc. are taught to students by trained staff members.
- 16 **Leadership cum Orientation Programmes** : Excursions, Trekking, Nature Camp, Value Education, Personality Development Programmes etc are included in the planner.
- 17 **Birthday** : Students of Foundation & Preparatory Wings only can wear casual dress on their birthdays. Distribution of “ toffees ” only is allowed to avoid disparity among students. Indulging in exchange of gifts or partying in the school campus is strictly forbidden. No casual dress is allowed on birthdays for classes VI-XII
- 18 **Library** : The school library offers a wide range of books in fiction and non-fiction categories besides a huge array of books related to subjects within the regular curriculum. We also have a Class Library in each class room, which is maintained by the respective class teacher. Each student is issued a book every Friday to read during the week.
- 19 **Literary Club** : Debates, Elocutions, Extempores, Creative Writing, Quizzes, School News Letters, Calligraphy, Essay Competitions and celebration of festivals are a major part of our curriculum.
- 20 **Career Counselling** : Career counselling sessions are conducted for senior classes. Eminent personalities from different fields are invited to share their views and experiences with the students so as to motivate and guide them towards their bright future with the right aptitude and attitude.
- 21 **Payment of Fees** : Parents are requested to pay the school fees on time. Late fee of ₹50 per week will be levied if the fee is not paid on the due date which is up to the 10th day of the month, and thereafter, the student’s name will be struck off the rolls. Fine is levied for non compliance of instructions, and no plea of ignorance of the rule is accepted. The link for online fee payment is available on the school website.
- 22 **Information Technology** : Computer education is provided to all the classes. School has also added smart class rooms, as it is rightly said, “One seeing is better than a thousand things said or heard”. Each classroom is equipped with digital boards which facilitate innovative patterns in educative curricula.

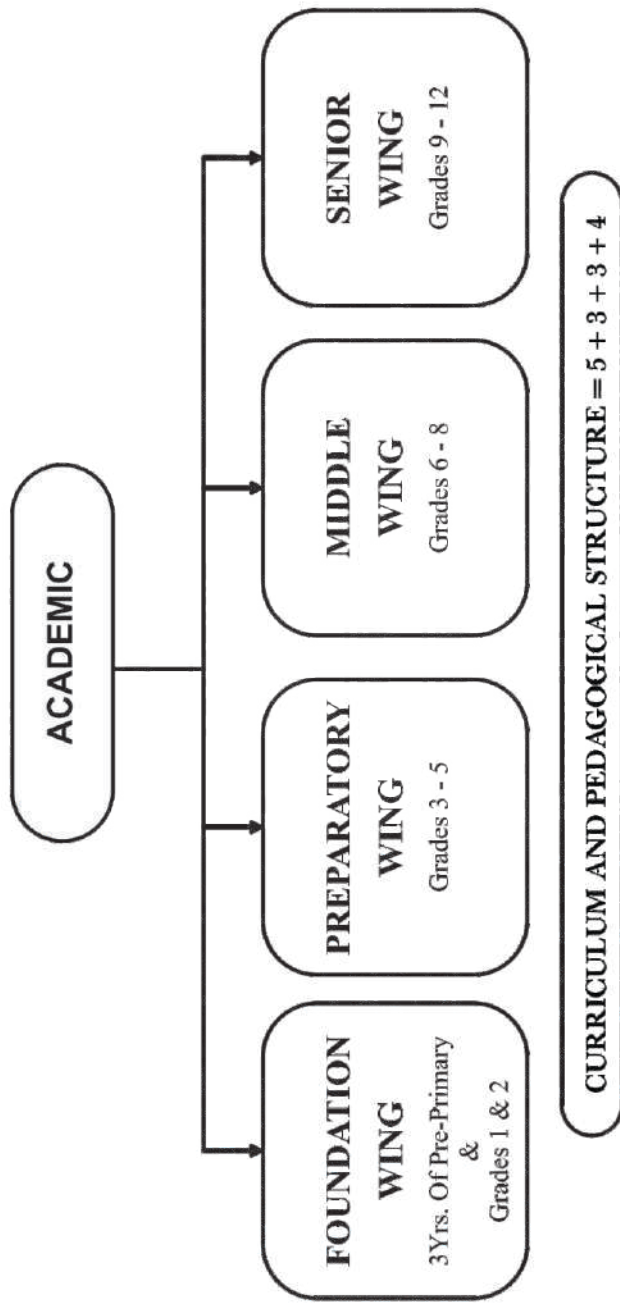
- 23 **Security** : Visitors are requested to comply with the security rules so that proper security and vigilance is maintained. I-cards are compulsory for students and staff. Self students to wear RED TAG, Van students to wear BLUE TAG , Bus students to wear YELLOW TAG. Parents who come to pick up their wards must carry their Parent Cards. No parent is allowed to pick up the child without the gate pass during the school hours.
- 24 **Transportation** : School has a hired transport system. Parents must strictly follow the pick-up and drop timings given to them. Parents interested in availing school transport should apply for the same at the beginning of the session, and should deposit the transport fee for the first quarter before the session starts. **Any request** for withdrawal of transport facility during the session shall not be entertained. Parents of newly admitted students shall drop their wards on the first day of the school, and in the afternoon, they will be shown the bus route to help them decide the pick-up and drop points.

In case the parents choose to opt for private van / self pickup, a written intimation in this regard must be submitted to the school.

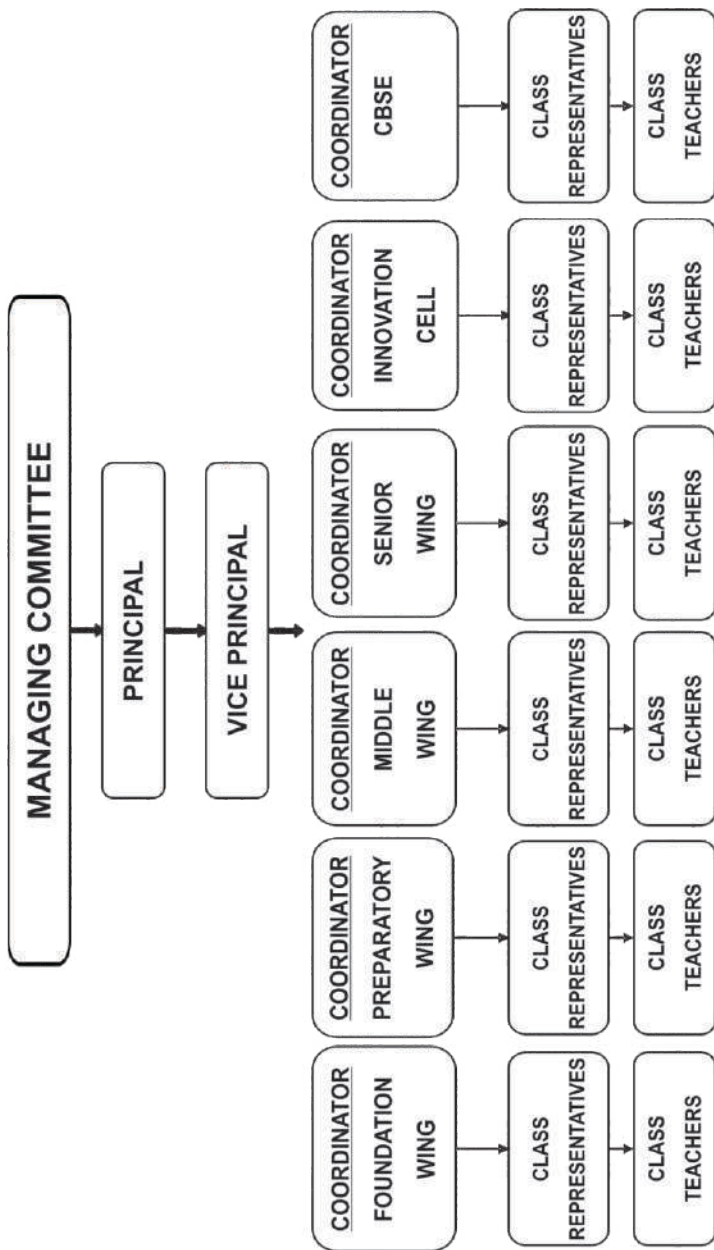
We would like to reassure the parents that the 'apple of your eye' whom you have entrusted to our care, will be taken care of, with all the love and affection they well-deserve; and that we are fully conscious of what is expected of us in laying a strong foundation, for not only learning to read and write but also for inculcating a healthy, moral value system in them. We expect wholehearted cooperation from parents, guardians and all our well-wishers, to make it happen. Character building is an arduous task, which can only be accomplished with your valuable support and good wishes.

SCHOOL STRUCTURE

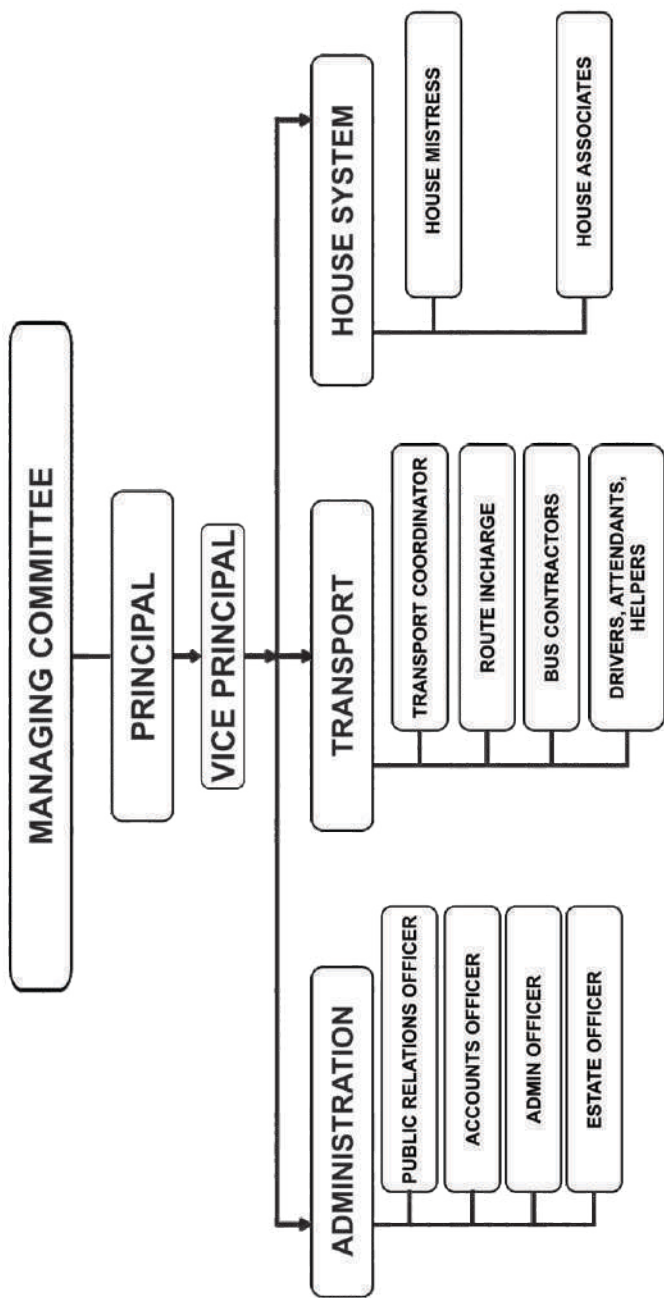
(AS PER NEP 2020)



ACADEMIC FUNCTIONING



NON ACADEMIC FUNCTIONING



TEACHERS' TIME TABLE

SESSION 2024-25

DATE	SUBMISSIONS
28th March	Syllabus to be uploaded
10th May	Classwise summer assignments to be uploaded
12th July	PT I - Two sets of Question Papers with blue print & marking scheme
9th August	PT I - Answer sheets to be handed over to students
27th August	MID TERM - Two sets of Question Papers with blue print & marking scheme
14th October	MID TERM - Answer sheets to be handed over to students
4th November	Mid Term - Report cards & consolidated register for signing
29th November	PT II - Two sets of Question Papers with blue print & marking scheme
15th January	PT II - Answer sheets to be handed over to students
15th January	PT II - Report cards & consolidated register for signing
10th February	FINAL TERM - Two sets of Question Papers with blue print & marking scheme
20th March	FINAL TERM - Report cards & consolidated register for signing

**EXPECTED SCHOLASTIC & CO-SCHOLASTIC LEARNING OUTCOMES
FOUNDATION WING**

CLASS	MID TERM TEST	FINAL TERM	EXPECTED LEARNING OUTCOMES
LEVEL II	SYLLABUS-BASED ON LEARNING OUTCOMES	SYLLABUS-BASED ON LEARNING OUTCOMES	TO UNDERSTAND & OBEY SIMPLE DIRECTIONS
	ASSESSMENT I	ASSESSMENT II	TO DEVELOP SENSORY MOTOR SKILLS
	MONTH -SEPTEMBER	MONTH -FEBRUARY	TO DEVELOP LISTENING SKILLS
			TO DEVELOP WORK HABITS
			TO RECOGNISE LETTERS & SOUNDS
			TO RECITE POEMS & IDENTIFY OBJECTS
			TO DEVELOP SOCIAL SKILLS
			TO INITIATE POSITIVE ATTITUDE
			TO INTRODUCE VISUAL & PERFORMING ARTS
			TO DEVELOP PHYSICAL STRENGTH

LEVEL III	SYLLABUS-BASED ON LEARNING OUTCOMES	SYLLABUS-BASED ON LEARNING OUTCOMES	TO DEVELOP CONCENTRATION
	ASSESSMENT I	ASSESSMENT II	LEARN TO WRITE LETTERS & NUMBERS
	MONTH -SEPTEMBER	MONTH -FEBRUARY	TO BUILD UP VOCABULARY
			TO REINFORCE WRITING & READING SKILLS
			TO DEVELOP VISUAL PERCEPTION
			TO INTRODUCE VISUAL & PERFORMING ARTS
			TO DEVELOP HABIT OF INITIATION
			TO BUILD UP PHYSICAL HEALTH

**EXPECTED SCHOLASTIC & CO-SCHOLASTIC OUTCOMES
FOUNDATION WING**

CLASS	MID TERM TEST	FINAL TERM	EXPECTED LEARNING OUTCOMES
I	SYLLABUS-BASED ON	SYLLABUS-BASED ON	TO MAINTAIN REASONABLE ATTENTION SPAN
	LEARNING OUTCOMES	LEARNING OUTCOMES	TO LEARN TO INTERACT WITH PEERS
	ASSESSMENT I	ASSESSMENT II	TO DEVELOP COMMUNICATION SKILLS
	MONTH -SEPTEMBER	MONTH -FEBRUARY	TO ENHANCE VOCABULARY
			TO DEVELOP LOGICAL APPLICATION
			TO DEVELOP APPRECIATION OF VISUAL & PERFORMING ARTS
			TO INCULCATE KINDNESS & PATIENCE
			TO ADD MORAL VALUES
			TO OBEY SCHOOL RULES
			INTRODUCTION TO SPORTS & GAMES

II	SYLLABUS-BASED ON	SYLLABUS-BASED ON	TO INITIATE CREATIVE WRITING
	LEARNING OUTCOMES	LEARNING OUTCOMES	TO INCULCATE READING HABIT
	ASSESSMENT I	ASSESSMENT II	TO INTRODUCE MENTAL MATH SKILLS
	MONTH -SEPTEMBER	MONTH -FEBRUARY	TO INTRODUCE IT SKILLS
			TO BUILD UP VOCABULARY
			TO DEVELOP APPRECIATION OF VISUAL & PERFORMING ARTS
			TO DEVELOP GENERAL AWARENESS
			TO INITIATE ANALYTICAL THINKING & PROBLEM SOLVING
			TO DISPLAY SELF ESTEEM
			TO COMMUNICATE FEELINGS & DESIRES APPROPRIATELY
		TO INSTIL SPIRIT OF SPORTSMANSHIP	

EXPECTED SCHOLASTIC & CO-SCHOLASTIC OUTCOMES PREPARATORY WING

CLASS	PERIODIC TEST-I	MID TERM TEST	PERIODIC TEST-II	FINAL TERM TEST	EXPECTED LEARNING OUTCOMES
III	SYLLABUS-25%	SYLLABUS-50%	SYLLABUS-50%	SYLLABUS-50%	TO DEVELOP IT SKILLS
	MARKS ALLOTTED-40	MARKS ALLOTTED-80	MARKS ALLOTTED-40	MARKS ALLOTTED-80	TO ENHANCE COMMUNICATION SKILLS
	TIME ALLOTTED-1.5 Hrs	TIME ALLOTTED-3 Hrs.	TIME ALLOTTED-1.5 Hrs	TIME ALLOTTED-3 Hrs.	TO ENHANCE WRITING SKILLS
	MONTH -JULY	MONTH-SEPTEMBER	MONTH-DECEMBER	MONTH -FEBRUARY	TO ENHANCE VOCABULARY
		INTERNAL ASSESSMENT 20 MARKS		INTERNAL ASSESSMENT 20 MARKS	TO INTRODUCE TO PUBLIC SPEAKING
				TO DEVELOP MENTAL MATH SKILLS	
					TO DEVELOP GENERAL AWARENESS
					TO REINFORCE MORAL VALUES
					TO PARTICIPATE IN VISUAL & PERFORMING ARTS
					TO INITIATE LEARNING OF SPECIALISED GAME
IV	SYLLABUS-25%	SYLLABUS-50%	SYLLABUS-50%	SYLLABUS-50%	TO DEVELOP IT SKILLS
	MARKS ALLOTTED-40	MARKS ALLOTTED-80	MARKS ALLOTTED-40	MARKS ALLOTTED-80	TO ENHANCE LINGUISTIC SKILLS
	TIME ALLOTTED-1.5 Hrs	TIME ALLOTTED-3 Hrs.	TIME ALLOTTED-1.5 Hrs	TIME ALLOTTED-3 Hrs.	TO ENHANCE SCIENTIFIC TEMPERAMENT
	MONTH -JULY	MONTH-SEPTEMBER	MONTH-DECEMBER	MONTH -FEBRUARY	TO DEVELOP MATHEMATICAL APPLICATION SKILLS
		INTERNAL ASSESSMENT 20 MARKS		INTERNAL ASSESSMENT 20 MARKS	TO CREATE GENERAL AWARENESS
				TO CREATE VALUE DOMAIN	
					TO PARTICIPATE IN VISUAL & PERFORMING ARTS
					TO DEVELOP INTEREST IN SPORTS & GAMES
V	SYLLABUS-25%	SYLLABUS-50%	SYLLABUS-50%	SYLLABUS-50%	TO HELP MASTER IT SKILLS
	MARKS ALLOTTED-40	MARKS ALLOTTED-80	MARKS ALLOTTED-40	MARKS ALLOTTED-80	TO ESTABLISH LINGUISTIC SKILLS
	TIME ALLOTTED-1.5 Hrs	TIME ALLOTTED-3 Hrs.	TIME ALLOTTED-1.5 Hrs	TIME ALLOTTED-3 Hrs.	TO HELP MASTER SCIENTIFIC PERCEPTION
	MONTH -JULY	MONTH-SEPTEMBER	MONTH-DECEMBER	MONTH -FEBRUARY	TO HELP MASTER APPLICATION SKILLS
		INTERNAL ASSESSMENT 20 MARKS		INTERNAL ASSESSMENT 20 MARKS	TO DEVELOP SENSITIVITY TOWARDS CULTURE & HERITAGE
				TO DEVELOP SOCIAL & COMMUNITY SERVICES	
					TO ENHANCE VALUE DOMAIN
					TO CREATE GENERAL AWARENESS
					TO BE ABLE TO EXPRESS OPINION
					TO HELP MASTER CREATIVE VISUALISATION
					TO PARTICIPATE IN VISUAL & PERFORMING ARTS
					TO DEVELOP INTEREST IN SPORTS & GAMES

EXPECTED SCHOLASTIC & CO-SCHOLASTIC OUTCOMES MIDDLE WING

CLASS	PERIODIC TEST-I	MID TERM TEST	PERIODIC TEST-II	FINAL TERM TEST	EXPECTED LEARNING OUTCOMES
VI	SYLLABUS-40%	SYLLABUS-50%	SYLLABUS-40%	SYLLABUS-100%	TO ENHANCE IT SKILLS
	MARKS ALLOTTED-40	MARKS ALLOTTED-80	MARKS ALLOTTED-40	MARKS ALLOTTED-80	TO ENHANCE READING ABILITY
	TIME ALLOTTED-1.5 Hrs	TIME ALLOTTED-3Hrs.	TIME ALLOTTED-1.5 Hrs.	TIME ALLOTTED-3Hrs.	TO REINFORCE PUBLIC SPEAKING SKILL
	MONTH - JULY	MONTH-SEPTEMBER	MONTH-DECEMBER	MONTH -FEBRUARY	TO ENHANCE APPRECIATION OF VISUAL & PERFORMING ARTS
		INTERNAL ASSESSMENT		INTERNAL ASSESSMENT	TO DEVELOP SOCIAL & COMMUNITY SERVICES
		ASSESSMENT 20 MARKS		20 MARKS	TO INCULCATE EMPATHY
					TO TRAIN FOR PHYSICAL FITNESS
VII	SYLLABUS-40%	SYLLABUS-50%	SYLLABUS-40%	SYLLABUS-100%	TO DEVELOP ANALYTICAL SKILLS
	MARKS ALLOTTED-40	MARKS ALLOTTED-80	MARKS ALLOTTED-40	MARKS ALLOTTED-80	TO DEVELOP CAPACITY TO INTEGRATE KNOWLEDGE
	TIME ALLOTTED-1.5 Hrs	TIME ALLOTTED-3Hrs.	TIME ALLOTTED-1.5 Hrs.	TIME ALLOTTED-3Hrs.	TO ENHANCE APPRECIATION OF VISUAL & PERFORMING ARTS
	MONTH - JULY	MONTH-SEPTEMBER	MONTH-DECEMBER	MONTH -FEBRUARY	TO TRAIN FOR DISASTER MANAGEMENT
		INTERNAL ASSESSMENT		INTERNAL ASSESSMENT	TO HELP THEM STRENGTHEN & GROW EMOTIONALLY
		ASSESSMENT 20 MARKS		20 MARKS	TO HELP RECOGNISE ETHICS OF CHOICES & ACTIONS
					TO WORK IN COLLABORATION & DEVELOP TEAM SPIRIT
VIII	SYLLABUS-40%	SYLLABUS-50%	SYLLABUS-40%	SYLLABUS-100%	TO DEVELOP PROBLEM SOLVING STRATEGIES
	MARKS ALLOTTED-40	MARKS ALLOTTED-80	MARKS ALLOTTED-40	MARKS ALLOTTED-80	TO DEVELOP THE ABILITY TO INTEGRATE & APPLY
	TIME ALLOTTED-1.5 Hrs	TIME ALLOTTED-3Hrs.	TIME ALLOTTED-1.5 Hrs.	TIME ALLOTTED-3Hrs.	TO DEVELOP SCIENTIFIC TEMPERAMENT
	MONTH - JULY	MONTH-SEPTEMBER	MONTH-DECEMBER	MONTH -FEBRUARY	TO ESTABLISH APPRECIATION OF VISUAL & PERFORMING ARTS
		INTERNAL ASSESSMENT		INTERNAL ASSESSMENT	TO DEVELOP CAPACITY TO DESCRIBE & ANALYSE
		ASSESSMENT 20 MARKS		20 MARKS	TO TRAIN FOR DISASTER PREPAREDNESS

EXPECTED SCHOLASTIC & CO-SCHOLASTIC OUTCOMES SENIOR WING

CLASS	PERIODIC TEST I	MID TERM TEST	PERIODIC TEST -II	PREBOARDS	FINAL TERM TEST	LEARNING OUTCOMES
IX	SYLLABUS-40% MARKS ALLOTTED-40 TIME ALLOTTED-1.5 Hrs	SYLLABUS-50% MARKS ALLOTTED-80 TIME ALLOTTED-3 Hrs	SYLLABUS-40% MARKS ALLOTTED-40 TIME ALLOTTED-1.5 Hrs	N/A	SYLLABUS-100% MARKS ALLOTTED-80 TIME ALLOTTED- 3Hrs.	TO REINFORCE IT SKILLS TO PROMOTE PUBLIC SPEAKING SKILL TO PROMOTE SOCIAL AND COMMUNITY SERVICES TO ENHANCE GENERAL AWARENESS
	MONTH-JULY	MONTH-SEPTEMBER	MONTH-DECEMBER	MONTH-JANUARY	MONTH-FEBRUARY	TO REINFORCE APPRECIATION OF VISUAL AND PERFORMING ARTS
	INTERNAL ASSESSMENT 20 MARKS	INTERNAL ASSESSMENT 20 MARKS	INTERNAL ASSESSMENT 20 MARKS	INTERNAL ASSESSMENT 20 MARKS	INTERNAL ASSESSMENT 20 MARKS	TO EXCEL IN A CHOSEN GAME TO DEVELOP THE CAPACITY TO ANALYSE & EVALUATE TO DEVELOP SELF ESTEEM AND SELF-CONFIDENCE
X	SYLLABUS-40% MARKS ALLOTTED-40 TIME ALLOTTED-1.5 Hrs	SYLLABUS-60% MARKS ALLOTTED-80 TIME ALLOTTED-3 Hrs	SYLLABUS-100% MARKS ALLOTTED-70/80 TIME ALLOTTED- 3Hrs.	SYLLABUS-100% MARKS ALLOTTED-80 TIME ALLOTTED- 3Hrs.	FINAL TERM BOARD EXAM MONTH-MARCH	TO DEVELOP IT SKILLS TO ENHANCE PUBLIC SPEAKING SKILLS TO PROMOTE SOCIAL AND COMMUNITY SERVICES TO ENHANCE GENERAL AWARENESS TO DEVELOP COMPETENCY IN VISUAL AND PERFORMING ARTS
	MONTH-JULY	MONTH-SEPTEMBER	MONTH-DECEMBER	MONTH-JANUARY	MONTH-MARCH	TO EXCEL IN A CHOSEN GAME TO DEVELOP THE CAPACITY TO ANALYSE & EVALUATE TO ESTABLISH SELF ESTEEM & SELF-CONFIDENCE
	INTERNAL ASSESSMENT 20 MARKS	INTERNAL ASSESSMENT 20 MARKS	INTERNAL ASSESSMENT 20 MARKS	INTERNAL ASSESSMENT 20 MARKS	INTERNAL ASSESSMENT 20 MARKS	
XI	SYLLABUS-40% MARKS ALLOTTED-40 TIME ALLOTTED-1.5 Hrs	SYLLABUS-50% MARKS ALLOTTED-70/80 TIME ALLOTTED-3 Hrs	SYLLABUS-40% MARKS ALLOTTED-40 TIME ALLOTTED-1.5 Hrs	N/A	SYLLABUS-100% MARKS ALLOTTED-70/80 TIME ALLOTTED- 3Hrs.	TO EXCEL IN IT SKILLS TO EXCEL IN PUBLIC SPEAKING TO PARTICIPATE IN SOCIAL AND COMMUNITY SERVICES TO ESTABLISH GENERAL AWARENESS TO APPRECIATE VISUAL & PERFORMING ARTS TO MASTER A CHOSEN GAME TO ESTABLISH SELF ESTEEM & SELF-CONFIDENCE
	MONTH-JULY	MONTH-SEPTEMBER	MONTH-DECEMBER	MONTH-JANUARY	MONTH-FEBRUARY	
	PRACTICAL/PROJECT 30/20 MARKS	PRACTICAL/PROJECT 30/20 MARKS	PRACTICAL/PROJECT 30/20 MARKS	PRACTICAL/PROJECT 30/20 MARKS	PRACTICAL/PROJECT 30/20 MARKS	
XII	SYLLABUS-40% MARKS ALLOTTED-40 TIME ALLOTTED-1.5 Hrs	SYLLABUS-60% MARKS ALLOTTED-70/80 TIME ALLOTTED-3 Hrs	SYLLABUS-100% MARKS ALLOTTED-70/80 TIME ALLOTTED- 3Hrs.	SYLLABUS-100% MARKS ALLOTTED-70/80 TIME ALLOTTED- 3Hrs.	FINAL TERM BOARD EXAM MONTH-MARCH	TO ACHIEVE EXCELLENCE IN IT SKILLS TO EXCEL IN PUBLIC SPEAKING TO PARTICIPATE IN SOCIAL AND COMMUNITY SERVICES TO ESTABLISH GENERAL AWARENESS TO DEVELOP COMPETENCY IN VISUAL & PERFORMING ARTS TO MASTER A CHOSEN GAME TO DEMONSTRATE SELF ESTEEM & SELF-CONFIDENCE
	MONTH-JULY	MONTH-SEPTEMBER	MONTH-DECEMBER	MONTH-JANUARY	MONTH-MARCH	
	PRACTICAL/PROJECT 30/20 MARKS	PRACTICAL/PROJECT 30/20 MARKS	PRACTICAL/PROJECT 30/20 MARKS	PRACTICAL/PROJECT 30/20 MARKS	PRACTICAL/PROJECT 30/20 MARKS	

SCHEME OF EVALUATION-2024-25

The Final Assessment of the students will be based on complete syllabus. Parents are requested to strictly keep in mind the examination schedule before planning vacations.

Retest will not be conducted in any of the subjects hence forth.

Best of two periodic tests will be considered for Internal Assessment.

Scheme of assessment for Preparatory, Middle and Senior wings is given in Appendix 1 and 2 respectively.

Assessment Scheme for Classes III to X is as follows:

1. Scholastic Areas

Total (100 marks)					
Subjects	80 Marks (Board examination/ Final Term) Student has to secure 33% marks out of 80 marks in each subject	20 Marks (Internal Assessment) Student has to secure 33% marks out of 20 marks in each subject			
		Pen Paper Test (5 marks)	Multiple Assessment (5 marks)	Portfolio (5 marks)	Subject Enrichment (5 marks)
Language I	Examination for 80 marks in each subject covering 100% syllabus of the subject. Both Marks and Grades will be awarded for Individual subjects. 9-point grading will be followed same as in Class XII	Periodic Written Test, restricted to three in each subject in an academic year. Average of the best two tests will be taken for final marks submission	Strategies to be used (Quizzes, Oral Test, Concept Map, Exit Cards, Visual Expression etc.)	Class Work Plus Peer Assessment, Achievements of Student in the Subject, Reflections, Narrations, Journals etc.	Speaking and Listening skills
Language II					Speaking and Listening skills
Science					Practical Lab Work
Mathematics					Math Lab Project
Social Science					Map and Project Work

(i) Pen Paper Test (5marks) :

The school will conduct three periodic written tests in the entire academic year and the average of the best two will be taken . The school has the autonomy to make its own schedule. However , for the purpose of gradient learning, three tests may be held as one being the midterm test and the other two being pre mid and post mid term with portion of syllabus cumulatively covered. The gradually increasing portions of content would prepare students and help them gain confidence for appearing in board examination with 100 % syllabus. The school will take the average of the best two tests for final marks submission.

(ii) Multiple Assessment (5 marks) :

Subject teacher would use different strategies such as quiz, oral test, concept mapping, visual expressions etc. for assessing students.

(iii) Portfolio (5 marks) :

Notebook submission as a part of internal assessment is aimed at ensuring seriousness of students towards preparing notes for the topics taught in the classroom as well as assignments. This also addresses the critical aspect of regularity, punctuality, neatness and notebook upkeep, peer assessment, achievements of students in the subject, reflections, narrations, journals etc.

(iv) Subject Enrichment Activities (5 marks) :

These are subject specific application activities aimed at enrichment of the understanding and skill development. These activities are to be recorded internally by respective subject teachers.

For Languages :

Activities conducted for subject enrichment in languages should aim at equipping the learner to develop effective speaking and listening skills.

For Mathematics :

The listed laboratory activities and projects as given in the prescribed publication of CBSE/NCERT may be followed.

For Science :

The listed practical works / activities will be carried out as prescribed by the CBSE in the curriculum.

For Social Science :

Map and project work will be undertaken as prescribed by the CBSE in the curriculum.

2. Co- Scholastic Activities :

School promotes co - curricular activities for the holistic development of the students. These activities are graded on a 5-point grading scale (A to E) and will have no descriptive indicators.

Activity	To be graded on a 5-point scale (A-E) in school	Areas and Objectives (as prescribed in the Scheme of Studies for Subjects of Internal Assessment)
Work Education or Pre- Vocational Education	By the concerned Teacher	It is a distinct curricular area for students for participation in social, economic and welfare activities. Student gets a sense of community service and develops self reliance.
Art Education	By the VA/PA or the concerned Teacher	Art Education constitutes an important area of curricular activity for development of wholesome personality of the students. Students will select one or more forms of creative arts.
Health & Physical Education	By the PE Teacher	Health and Physical education preferably sports must be given a regular period. Students should be provided opportunities to get professionally trained in the area of their interest. Indigenous sports, yoga and NCC must be encouraged in the schools, creating a sense of physical fitness, discipline, sportsmanship, patriotism, self- sacrifice and health care.

2. Discipline (Attendance, Sincerity, Behavior, Values) :

Discipline significantly impacts career shaping and it helps build character, Sincerity, good behaviour and values develop strength and foster unity and co-operation. Therefore, the element of discipline has been introduced. The class teacher is responsible for student grades on a Five Point Scale (A to E)

The internal assessment comprising 20 Marks (5+5+5+5) entails objectivity and a structured approach. For a holistic assessment, the teachers are expected to make it an effective tool.

SCHEME OF EVALUATION FOR CLASSES XI AND XII (2024-25)

1. Scholastic areas

Subjects	Total 100 Marks	
	Theory	Practical/ Internal Assessment
English, Mathematics, Applied Math	80 marks	20 marks
Economics, Political Science, Sociology, Business Studies, Accountancy	80 marks	20 marks
Physics, Chemistry, Biology, Computer Science, Informatics Practices, Psychology, Physical Education	70 marks	30 marks
	Examination for said marks in each subject covering 100 % syllabus , Marks would be awarded for individual subjects. 9 point grading will be followed as per CBSE	Examination for listed practical or project work as per CBSE

2. Co-Scholastic Areas

School will promote co-scholastic activities for the holistic development of the student. These activities will be graded on a 5 point grading scale (A to E) and will have no descriptive indicators.

Activity	To be graded on a 5 point scale (A to E) in school	Areas and objectives (as prescribed in the scheme of Studies for subjects of Internal Assessment)
Work Education	By the concerned teacher	It is a distinct area for students for participation in social, economic and welfare activities. Student gets a sense of community service and develops self reliance.
Health and Physical Education	By PE teacher	Health and Physical Education preferably sports must be given a regular period. Students should be provided opportunities to get professionally trained in the area of their interest. Indigenous sports, Yoga and NCC must be encouraged in the schools creating a sense of physical fitness, discipline, sportsmanship, patriotism, self sacrifice and health care.
General Studies	By the concerned teacher	It is an area where general awareness of student is tested.

DETAILS OF PERIODIC TESTS AND EXAMINATION SCHEDULE

PERIODIC TEST I

SESSION 2024-25

JULY (2024)

DAY & DATE	SUBJECT CLASS III	SUBJECT CLASS IV	SUBJECT CLASS V	SUBJECT CLASS VI	SUBJECT CLASS VII	SUBJECT CLASS VIII	SUBJECT CLASS IX	SUBJECT CLASS X	SUBJECT CLASS XI	SUBJECT CLASS XII
WED 24/07/2024	MATH	EVS	MATH	SOCIAL SCIENCE	MATH	SCIENCE	SCIENCE	MATH	MATHS / AM / IP / PSY	CHEM / BST / SOCIOLOGY
THU 25/07/2024	HINDI	ENGLISH	HINDI	^{III} LANGUAGE	ENGLISH	HINDI	ENGLISH	HINDI	PE	ENGLISH
FRI 26/07/2024	EVS	HINDI	ENGLISH	MATH	HINDI	^{III} LANGUAGE	MATH	SOCIAL SCIENCE	CS / BIO / ECO	PHY / ACCOUNTS / POL. Sci.
MON 29/07/2024	ENGLISH	MATH	EVS	SCIENCE	SOCIAL SCIENCE	MATH	SOCIAL SCIENCE	SCIENCE	CHEM / BST / SOCIOLOGY	MATHS / AM / IP / PSY
TUE 30/07/2024	WORKING DAY	WORKING DAY	WORKING DAY	ENGLISH	^{III} LANGUAGE	ENGLISH	HINDI	ENGLISH	ENGLISH	PE
WED 31/07/2024	WORKING DAY	WORKING DAY	WORKING DAY	HINDI	SCIENCE	SOCIAL SCIENCE	WORKING DAY	WORKING DAY	PHY / ACCOUNTS / POL. Sci.	CS / BIO / ECO
THU 01/08/2024	WORKING DAY	WORKING DAY	WORKING DAY	WORKING DAY	WORKING DAY	WORKING DAY	WORKING DAY	WORKING DAY	ENT	ENT

Note: PT I

- 1) PT-I will be conducted in zero period.
- 2) Answer sheets will be given to students on 9 August 2024 (Friday).

DETAILS OF PERIODIC TESTS AND EXAMINATION SCHEDULE

MID TERM

SESSION 2024-25

SEPTEMBER (2024)

Day & Date	Subject Class III	Subject Class IV	Subject Class V	Subject Class VI	Subject Class VII	Subject Class VIII	Subject Class IX	Subject Class X	Subject Class XI	Subject Class XII
FRI 13/09/2024	HALF WORKING DAY	HALF WORKING DAY	HALF WORKING DAY	MATH	SCIENCE	SOCIAL SCIENCE	SOCIAL SCIENCE	SCIENCE	CHEM/BSSTOCIO	MATHS/AM /IP/PSY
TUE 17/09/2024	HALF WORKING DAY	HALF WORKING DAY	HALF WORKING DAY	SOCIAL SCIENCE	MATH	SCIENCE	MATH	SOCIAL SCIENCE	PHY/ACC / POL. Sci	ENGLISH
WED 18/09/2024	ENGLISH	ENGLISH	EVS	PREP LEAVE	PREP LEAVE	PREP LEAVE	PREP LEAVE	PREP LEAVE	PREP LEAVE	PREP LEAVE
THU 19/09/2024	PREP LEAVE	PREP LEAVE	PREP LEAVE	III LANGUAGE	ENGLISH	HINDI	HINDI/ SANS/ FRENCH	ENGLISH	ENGLISH	CS/ BIO/ ECO
FRI 20/09/2024	HINDI	EVS	HINDI	PREP LEAVE	PREP LEAVE	PREP LEAVE	PREP LEAVE	PREP LEAVE	PREP LEAVE	PREP LEAVE
MON 23/09/2024	PREP LEAVE	PREP LEAVE	PREP LEAVE	SCIENCE	SOCIAL SCIENCE	MATH	SCIENCE	MATH	MATHS/AM /IP/PSY	CHEM/BSSTOCIO
TUE 24/09/2024	MATH	MATH	MATH	PREP LEAVE	PREP LEAVE	PREP LEAVE	PREP LEAVE	PREP LEAVE	PREP LEAVE	PREP LEAVE
WED 25/09/2024	PREP LEAVE	PREP LEAVE	PREP LEAVE	HINDI	III LANGUAGE	ENGLISH	ENGLISH	HINDI/ SANS/ FRENCH	CS/ BIO/ ECO	PE
THU 26/09/2024	EVS	HINDI	ENGLISH	PREP LEAVE	PREP LEAVE	PREP LEAVE	PREP LEAVE	PREP LEAVE	ENT	ENT
FRI 27/09/2024	HALF WORKING DAY	HALF WORKING DAY	HALF WORKING DAY	ENGLISH	HINDI	III LANGUAGE	COMP. APPL.	COMP. APPL.	PE	PHY/ ACC. / POL. Sci

Note: MID TERM

- 1) Art examination will be held on 06/09/2024 (Friday)
- 2) Practical exam in Computer, Science, Art, Music, will be conducted during their regular classes. Dates will be intimated through diary note.
- 3) Buses will ply at normal school timings in the morning & roll out at 12:30 p.m after the examination.
- 4) Answer sheets will be given to students on 14/10/2024 (Monday)

DETAILS OF PERIODIC TESTS AND EXAMINATION SCHEDULE

PERIODIC TEST II / PREBOARD-I

SESSION 2024-25

DECEMBER (2024)

Day & Date	Subject Class III	Subject Class IV	Subject Class V	Subject Class VI	Subject Class VII	Subject Class VIII	Subject Class IX	Subject Class X	Subject Class XI	Subject Class XII
FRI 13/12/2024	WORKING DAY	WORKING DAY	WORKING DAY	WORKING DAY	WORKING DAY	WORKING DAY	WORKING DAY	MATH	WORKING DAY	CS/ BIO/ ECO
MON 16/12/2024	WORKING DAY	WORKING DAY	WORKING DAY	WORKING DAY	WORKING DAY	WORKING DAY	WORKING DAY	SOCIAL SCIENCE	WORKING DAY	PHY/ ACC. / POL. Scl
TUE 17/12/2024	HINDI	HINDI	ENGLISH	ENGLISH	HINDI	III LANGUAGE	ENGLISH	PREP LEAVE	CS/ BIO/ ECO	PREP LEAVE
WED 18/12/2024	ENGLISH	MATH	HINDI	MATH	SCIENCE	SOCIAL SCIENCE	SOCIAL SCIENCE	HINDI/ SANSKRIT/ FRENCH	PE	PE
THU 19/12/2024	EVS	ENGLISH	EVS	SOCIAL SCIENCE	MATH	SCIENCE	MATH	PREP LEAVE	CHEM/BSST SOCIO	PREP LEAVE
FRI 20/12/2024	MATH	EVS	MATH	III LANGUAGE	ENGLISH	HINDI	HINDI	ENGLISH	ENGLISH	ENGLISH
MON 23/12/2024	WORKING DAY	WORKING DAY	WORKING DAY	SCIENCE	SOCIAL SCIENCE	MATH	SCIENCE	SCIENCE	PHY/ ACC. / POL. Scl	CHEM/BSST SOCIO
TUE 24/12/2024	WORKING DAY	WORKING DAY	WORKING DAY	HINDI	III LANGUAGE	ENGLISH	WORKING DAY	WORKING DAY	MATHS/ AM IP/ PSY	PREP LEAVE
THU 26/12/2024	WORKING DAY	WORKING DAY	WORKING DAY	WORKING DAY	WORKING DAY	WORKING DAY	WORKING DAY	WORKING DAY	ENT	MATHS/ AM IP/ PSY
FRI 27/12/2024	WORKING DAY	WORKING DAY	WORKING DAY	WORKING DAY	WORKING DAY	WORKING DAY	WORKING DAY	WORKING DAY	WORKING DAY	ENT

Note: PT II

- 1) Board Practical Examinations of Science for class X will be conducted in the first week of December.
- 2) Periodic Test II are the Preboard I Examination for Class 10 and 12.
- 3) PT II will be conducted in zero period.
- 4) Answer sheets will be given to students of class 9 to 12 on 6/1/2025(Monday) and to students of class 3 to 8 on 15/01/2025 (Wednesday).

PRE BOARD II

SESSION 2024-25

JANUARY 2025		
	CLASS X	CLASS XII
Day & Date	SUBJECT	SUBJECT
MON 13/01/2025	SOCIAL SCIENCE	PHY/ ACCOUNTS/ POL.SCI.
WED 15/01/2025	ENGLISH	PE
FRI 17/01/2025	HINDI/ SANSKRIT/ FRENCH	MATH/ AM / IP/ PSY
MON 20/01/2025	SCIENCE	CHEM/ B.ST / SOCIOLOGY
WED 22/01/2025	MATH	ENGLISH
THU 23/01/2025		ENT
FRI 24/01/2025		CS/ BIO/ ECO

DETAILS OF PERIODIC TESTS AND EXAMINATION SCHEDULE

SESSION 2024-25

FEBRUARY (2025)

FINAL TERM

Day & Date	Subject Class III	Subject Class IV	Subject Class V	Subject Class VI	Subject Class VII	Subject Class VIII	Subject Class IX	Subject Class XI
MON 24/02/2025	WORKING DAY	WORKING DAY	WORKING DAY	SCIENCE	SOCIAL SCIENCE	MATH	HINDI/ SANSKRIT/ FRENCH	PHY/ ACC. / POL. Sci.
THU 27/02/2025	PREP. LEAVE	PREP. LEAVE	PREP. LEAVE	SOCIAL SCIENCE	MATH	SCIENCE	MATH	CHEM/BST SOCIOLOGY
FRI 28/02/2025	HINDI	ENGLISH	EVS	PREP. LEAVE	PREP. LEAVE	PREP. LEAVE	PREP. LEAVE	PREP. LEAVE
MON 3/03/2025	PREP. LEAVE	PREP. LEAVE	PREP. LEAVE	ENGLISH	III LANGUAGE	HINDI	SOCIAL SCIENCE	ENGLISH
TUE 4/03/2025	EVS	MATH	ENGLISH	PREP. LEAVE	PREP. LEAVE	PREP. LEAVE	PREP. LEAVE	PREP. LEAVE
WED 5/03/2025	PREP. LEAVE	PREP. LEAVE	PREP. LEAVE	MATH	ENGLISH	III LANGUAGE	ENGLISH	CS/BIO/ ECO
THU 6/03/2025	ENGLISH	HINDI	MATH	PREP. LEAVE	PREP. LEAVE	PREP. LEAVE	PREP. LEAVE	ENT
FRI 7/03/2025	PREP. LEAVE	PREP. LEAVE	PREP. LEAVE	HINDI	SCIENCE	SOCIAL SCIENCE	SCIENCE	PE
MON 10/03/2025	MATH	EVS	HINDI	III LANGUAGE	HINDI	ENGLISH	COMP. APPL.	MATHS/ AM/ IP/ PSY

Note: FINAL TERM

- 1) 24/02/2025 and 25/02/2025 are Teaching Days for Class III-V
- 2) Art examination for class VI to IX will be held on 16/02/2025 (Friday)
- 3) Practical exam of Computer, Science, Art & Music will be conducted during their regular classes. Dates will be intimated through diary note.
- 4) Buses will ply at normal school timings in the morning & roll out at 12:30 p.m after the examination.

MON	1	TD - NEW SESSION COMMENCES
TUE	2	TD - CRAFTY GREETINGS
WED	3	TD - AREA FAMILIARIZATION
THU	4	TD - CARD MAKING
FRI	5	TD - SCIENCE CHALLENGE
SAT	6	REMEDIAL TEACHING
SUN	7	HOLIDAY
MON	8	TD
TUE	9	TD - VERBALIZATION
WED	10	TD - WORKSHOP ON SOCIAL GRACES
THU	11	HOLIDAY - ID-UL-FITR
FRI	12	TD - CAREER COUNSELLING
SAT	13	HOLIDAY - SECOND SATURDAY
SUN	14	HOLIDAY
MON	15	TD
TUE	16	TD - EXPERIMATICS
WED	17	HOLIDAY - RAM NAVAMI
THU	18	TD - VISIT TO PLANETARIUM
FRI	19	TD - EXPRESSIONS
SAT	20	REMEDIAL TEACHING
SUN	21	HOLIDAY
MON	22	TD
TUE	23	TD - RESTORE OUR EARTH
WED	24	TD - OUR SPHERE
THU	25	TD - EXPLORER
FRI	26	TD - INVEST IN OUR PLANET
SAT	27	HOLIDAY - FOURTH SATURDAY
SUN	28	HOLIDAY
MON	29	TD
TUE	30	TD - VISIT TO PLANETARIUM

Working Days 22

NATIONAL & INTERNATIONAL DAYS

FRI	5	National Maritime Day
SUN	7	World No Smoking Day
SUN	14	Fire Service Day
SUN	14	Ambedkar Jayanti
THU	18	World Heritage Day
TUE	22	Earth Day

Wednesday Activities are for Level-II to Class-II

Tuesday Activities are for Classes III to V

Thursday Activities are for Classes VI to VIII

Friday Activities are for Classes IX to XII

Sports Activities (Matches) will be organised on monthly basis

Please Note : Holidays are subject to change as per Govt. notifications.

WED	1	TD - VISIT TO AIR-FORCE MUSEUM/ SPECIAL ASSEMBLY
THU	2	TD - OUR INDUSTRIOUS CLAN
FRI	3	TD - TURN THE TABLE
SAT	4	REMEDIAL TEACHING
SUN	5	HOLIDAY
MON	6	TD
TUE	7	TD - DAY WITH DENTIST
WED	8	TD - FRUIT BONANZA
THU	9	TD - WORKSHOP ON CYBER SAFETY
FRI	10	TD - INVESTITURE CEREMONY
SAT	11	PTM - I
SUN	12	HOLIDAY
MON	13	TD - Summer Vacation For Level-II to Class VIII / BRIDGE COURSE
TUE	14	TD
WED	15	TD
THU	16	TD
FRI	17	TD
SAT	18	LEADERSHIP CAMP FOR CLASS IX TO XII
SUN	19	HOLIDAY
MON	20	WORKING DAY FOR TEACHERS
TUE	21	WORKING DAY FOR TEACHERS
WED	22	Summer Vacation Commences
THU	23	HOLIDAY - BUDDH PURNIMA
FRI	24	
SAT	25	
SUN	26	
MON	27	
TUE	28	
WED	29	
THU	30	
FRI	31	

**S
U
M
M
E
R

V
A
C
A
T
I
O
N**

Working Days	17	Wednesday Activities are for Level-II to Class-II
NATIONAL & INTERNATIONAL DAYS		Tuesday Activities are for Classes III to V
WED	1	Worker's Day
WED	8	Red Cross Day
MON	13	National Solidarity Day
WED	15	International Day of the Family
FRI	17	World Communication Day
TUE	21	Anti Terrorism day
THU	30	World No Tobacco Day
		Thursday Activities are for Classes VI to VIII
		Friday Activities are for Classes IX to XII
		Sports Activities (Matches) will be organised on monthly basis

Please Note : Holidays are subject to change as per Govt. notifications.

SAT	1	S U M M E R
SUN	2	
MON	3	
TUE	4	
WED	5	
THU	6	
FRI	7	
SAT	8	
SUN	9	
MON	10	
TUE	11	
WED	12	
THU	13	
FRI	14	
SAT	15	V A C A T I O N
SUN	16	
MON	17	
TUE	18	
WED	19	
THU	20	
FRI	21	
SAT	22	
SUN	23	
MON	24	
TUE	25	TD
WED	26	TD
THU	27	TD
FRI	28	TD
SAT	29	HOLIDAY
SUN	30	HOLIDAY

Working Days **05**

NATIONAL & INTERNATIONAL DAYS

WED 5 World Environment Day

Wednesday Activities are for Level-II to Class-II

Tuesday Activities are for Classes III to V

Thursday Activities are for Classes VI to VIII

Friday Activities are for Classes IX to XII

Sports Activities (Matches) will be organised on monthly basis

Please Note : Holidays are subject to change as per Govt. notifications.

MON	1	TD - SCHOOL REOPENS FOR LEVEL II TO CLASS VIII
TUE	2	TD - TRASH TURNER
WED	3	TD - VERSE-A-TALITY
THU	4	TD - PROJECT EXPLORER
FRI	5	TD - PROJECT EXPLORER
SAT	6	REMEDIAL TEACHING
SUN	7	HOLIDAY
MON	8	TD
TUE	9	TD - TIE AND DYE
WED	10	TD - MY HAND IMPRESSIONS
THU	11	TD - PROJECT PROGRESSION
FRI	12	TD - PROJECT PROGRESSION
SAT	13	SECOND SATURDAY - HOLIDAY
SUN	14	HOLIDAY
MON	15	TD
TUE	16	TD - FABRIC ART
WED	17	HOLIDAY - MUHARRAM
THU	18	TD - SCIENCE TOON
FRI	19	TD - HOLIDAY FOR LEVEL II TO VIII/ HWD FOR CLASSES IX TO XII
SAT	20	PROJECT EXHIBITION- L' EXPOSITION
SUN	21	HOLIDAY
MON	22	TD
TUE	23	TD - WORKSHOP ON CYBER SAFETY
WED	24	TD - PATTERNS IN NATURE / PT-1 COMMENCES
THU	25	TD
FRI	26	TD
SAT	27	FOURTH SATURDAY - HOLIDAY
SUN	28	HOLIDAY
MON	29	TD
TUE	30	TD - KAVYANJALI
WED	31	TD - WORKSHOP ON FIRST AID / PT-1 CONCLUDES

Working Days	24	Wednesday Activities are for Level-II to Class-II
NATIONAL & INTERNATIONAL DAYS		Tuesday Activities are for Classes III to V
THU	11	World Population Day
FRI	26	Kargil Vijay Diwas
FRI	26	World Family Day
		Thursday Activities are for Classes VI to VIII
		Friday Activities are for Classes IX to XII
		Sports Activities (Matches) will be organised on monthly basis

Please Note : Holidays are subject to change as per Govt. notifications.

THU	1	TD - OUR CONSTITUTION OUR PRIDE
FRI	2	TD - HERITAGE QUIZ
SAT	3	REMEDIAL TEACHING
SUN	4	HOLIDAY
MON	5	TD
TUE	6	TD - KNOW OUR COUNTRY
WED	7	TD - CHARACTER DEPICTION
THU	8	TD - MERE SAPNO KA BHARAT
FRI	9	TD - INDIA OF MY VISION
SAT	10	SECOND SATURDAY - HOLIDAY
SUN	11	HOLIDAY
MON	12	TD
TUE	13	TD
WED	14	TD - INDEPENDENCE DAY CELEBRATIONS
THU	15	HOLIDAY - INDEPENDENCE DAY/ HWD FOR TEACHERS
FRI	16	TD
SAT	17	PTM - II
SUN	18	HOLIDAY
MON	19	HOLIDAY - RAKSHABANDHAN
TUE	20	TD - BRAIN TEASER
WED	21	TD - MY GRATITUDE JAR
THU	22	TD - VISIT TO P.M MUSEUM
FRI	23	TD - START-UP WAR
SAT	24	FOURTH SATURDAY - HOLIDAY
SUN	25	HOLIDAY
MON	26	HOLIDAY - JANMASHTAMI
TUE	27	TD - FINANCIAL LITERACY
WED	28	TD - SADAK SURAKSHA
THU	29	TD - KHELO INDIA
FRI	30	TD - KHELO INDIA
SAT	31	REMEDIAL TEACHING

Working Days

22

Wednesday Activities are for Level-II to Class-II

NATIONAL & INTERNATIONAL DAYS

TUE	6	Hiroshima Day
THU	8	Senior Citizen Day
FRI	9	Nagasaki Day / Quit India Day
THU	15	Independence Day
TUE	20	Sadbhavana Day
THU	29	National Sports Day

Tuesday Activities are for Classes III to V

Thursday Activities are for Classes VI to VIII

Friday Activities are for Classes IX to XII

Sports Activities (Matches) will be organised on monthly basis

Please Note : Holidays are subject to change as per Govt. notifications.

SUN	1	HOLIDAY
MON	2	TD
TUE	3	TD - SPIN A YARN
WED	4	TD - STICKY WORDS
THU	5	TEACHER'S DAY CELEBRATIONS
FRI	6	TD - WORKSHOP ON BANKING PROCEDURES
SAT	7	REMEDIAL TEACHING
SUN	8	HOLIDAY
MON	9	TD
TUE	10	TD - NOBEL LAUREATES
WED	11	TD - KNOW AND TELL
THU	12	TD
FRI	13	TD - MID-TERM EXAMINATION COMMENCES
SAT	14	HOLIDAY - SECOND SATURDAY
SUN	15	HOLIDAY
MON	16	HOLIDAY - EID-E-MILAD
TUE	17	TD
WED	18	TD - PAPER CRAFT
THU	19	TD
FRI	20	TD
SAT	21	REMEDIAL TEACHING
SUN	22	HOLIDAY
MON	23	TD
TUE	24	TD
WED	25	TD - DAY WITH POTTER
THU	26	TD
FRI	27	TD - MID-TERM EXAM CONCLUDES
SAT	28	HOLIDAY - FOURTH SATURDAY
SUN	29	HOLIDAY
MON	30	TD

Working Days 22

NATIONAL & INTERNATIONAL DAYS

THU	5	Teacher's Day
SUN	8	INTERNATIONAL LITERARY DAY
MON	16	World Ozone Day
THU	26	Day of the Deaf
FRI	27	World Tourism Day

Wednesday Activities are for Level-II to Class-II

Tuesday Activities are for Classes III to V

Thursday Activities are for Classes VI to VIII

Friday Activities are for Classes IX to XII

Sports Activities (Matches) will be organised on monthly basis

Please Note : Holidays are subject to change as per Govt. notifications.

TUE	1	TD - SHARE YOUR RECIPE
WED	2	GANDHI JAYANTI - HOLIDAY
THU	3	TD - MYTHOLOGICAL QUIZ
FRI	4	TD - SWACHTA MISSION
SAT	5	REMEDIAL TEACHING
SUN	6	HOLIDAY
MON	7	TD
TUE	8	TD - MYTHOLOGICAL SAGA
WED	9	TD - PEACE GARDEN
THU	10	HOLIDAY
FRI	11	HOLIDAY
SAT	12	HOLIDAY - DUSSEHRA
SUN	13	HOLIDAY
MON	14	TD
TUE	15	TD
WED	16	TD - MYTHOLOGICAL SAGA
THU	17	HOLIDAY - VALMIKI JAYANTI
FRI	18	TD
SAT	19	REMEDIAL TEACHING
SUN	20	HOLIDAY
MON	21	TD
TUE	22	TD - GANIT CHALLENGE
WED	23	TD - WORLD AROUND US
THU	24	TD
FRI	25	TD
SAT	26	TD
SUN	27	HOLIDAY - GRAND REHEARSAL
MON	28	HONOURS' DAY
TUE	29	WORKING DAY FOR TEACHERS
WED	30	HOLIDAY
THU	31	DIWALI

Working Days

20

Wednesday Activities are for Level-II to Class-II

NATIONAL & INTERNATIONAL DAYS

FRI	4	World Animal Day
SAT	5	World Habitat Day
TUE	8	Air Force Day/ World Elder's Day
WED	9	Territorial Army Day/ World Post Day
THU	10	National Post Day
SUN	13	National Disaster Reduction Day
MON	14	World standards Day
WED	16	World Food Day
THU	24	United Nations Day
WED	30	World Thrift Day
THU	31	National Integration Day

Tuesday Activities are for Classes III to V

Thursday Activities are for Classes VI to VIII

Friday Activities are for Classes IX to XII

Sports Activities (Matches) will be organised on monthly basis

Please Note : Holidays are subject to change as per Govt. notifications.

FRI	1	HOLIDAY - DIWALI
SAT	2	HOLIDAY
SUN	3	HOLIDAY
MON	4	TD
TUE	5	TD - ROLL ON WHEELS
WED	6	TD - IGNITED MINDS
THU	7	TD - WORKSHOP ON MENTAL WELL BEING
FRI	8	TD - THEATRE WORKSHOP
SAT	9	PTM-3
SUN	10	HOLIDAY
MON	11	TD
TUE	12	TD - SPELLING STONE
WED	13	TD - PUPPET SHOW
THU	14	TD - CHILDREN'S DAY CELEBRATION
FRI	15	HOLIDAY - GURU NANAK'S BIRTHDAY
SAT	16	REMEDIAL TEACHING
SUN	17	HOLIDAY
MON	18	TD
TUE	19	TD - VISIT TO DELHI DARSHAN PARK
WED	20	TD - KAVYA TARANG
THU	21	TD - ROAD SAFETY AWARENESS
FRI	22	TD - ROAD SAFETY CAMPAIGN
SAT	23	HOLIDAY - FOURTH SATURDAY
SUN	24	HOLIDAY
MON	25	TD
TUE	26	TD - DAY CAMP
WED	27	TD - VISIT TO DELHI DARSHAN PARK
THU	28	TD - LEADERSHIP CUM ORIENTATION CAMP
FRI	29	TD - EACH ONE TEACH ONE
SAT	30	REMEDIAL TEACHING

Working Days 22

NATIONAL & INTERNATIONAL DAYS

THU	14	Children's Day
SAT	16	Law Day

Wednesday Activities are for Level-II to Class-II

Tuesday Activities are for Classes III to V

Thursday Activities are for Classes VI to VIII

Friday Activities are for Classes IX to XII

Sports Activities (Matches) will be organised on monthly basis

Please Note : Holidays are subject to change as per Govt. notifications.

SUN	1	HOLIDAY
MON	2	TD - MINI FOOTBALL TOURNAMENT
TUE	3	TD - MINI FOOTBALL TOURNAMENT
WED	4	TD - MIND BODY SOUL
THU	5	TD - ATHLETIC MEET
FRI	6	TD
SAT	7	PARENTS VS STUDENTS SPORTS EVENT
SUN	8	HOLIDAY
MON	9	TD
TUE	10	TD - ATHLETIC MEET
WED	11	TD - ATHLETIC MEET
THU	12	TD
FRI	13	TD
SAT	14	SECOND SATURDAY - HOLIDAY
SUN	15	HOLIDAY
MON	16	TD - PT-2 COMMENCES
TUE	17	TD
WED	18	TD - CHRISTMAS CAROLS
THU	19	TD
FRI	20	TD
SAT	21	REMEDIAL TEACHING
SUN	22	HOLIDAY
MON	23	TD
TUE	24	TD - HWD/ CHRISTMAS CELEBRATIONS
WED	25	X-MAS DAY/ HOLIDAY
THU	26	TD - DAY WITH CARPENTER
FRI	27	TD
SAT	28	FOURTH SATURDAY - HOLIDAY
SUN	29	HOLIDAY
MON	30	STAFF PICNIC
TUE	31	HOLIDAY

Working Days

22

Wednesday Activities are for Level-II to Class-II

NATIONAL & INTERNATIONAL DAYS

SUN	1	World AIDS Day
TUE	3	Worlds Disabled Day
THU	5	Navy Day/ International Volunteer's Day
SAT	7	Flag Day
TUE	10	UN Human Right's Day
MON	23	Kisan Day
WED	25	Christmas Day
TUE	31	New Year Eve

Tuesday Activities are for Classes III to V

Thursday Activities are for Classes VI to VIII

Friday Activities are for Classes IX to XII

Sports Activities (Matches) will be organised on monthly basis

Please Note : Holidays are subject to change as per Govt. notifications.

WED	1	HOLIDAY
THU	2	HOLIDAY
FRI	3	HOLIDAY
SAT	4	HOLIDAY
SUN	5	HOLIDAY
MON	6	TD - SCHOOL REOPENS FOR IX TO XII
TUE	7	TD
WED	8	TD
THU	9	TD
FRI	10	TD
SAT	11	HOLIDAY - SECOND SATURDAY
SUN	12	HOLIDAY
MON	13	TD
TUE	14	HOLIDAY - MAKAR SANKRANTI
WED	15	TD - SCHOOL REOPENS FOR LEVEL II TO CLASS VIII
THU	16	TD - SCRATCH YOUR BRAIN
FRI	17	TD - VALUE DOMAIN
SAT	18	PTM-4
SUN	19	HOLIDAY
MON	20	TD
TUE	21	TD - DAY WITH GARDENER
WED	22	TD - DAY WITH A BAKER
THU	23	TD - WORKSHOP ON FINANCIAL LITERACY
FRI	24	TD - INTER-HOUSE FOOTBALL MATCH
SAT	25	HOLIDAY - FOURTH SATURDAY
SUN	26	REPUBLIC DAY- HOLIDAY
MON	27	TD
TUE	28	TD - RHYTHM DIVINE
WED	29	TD - VISIT TO QUTUB MINAR
THU	30	TD - INTER-HOUSE CRICKET MATCH
FRI	31	TD - DISASTER MANAGEMENT

Working Days **20**

NATIONAL & INTERNATIONAL DAYS

WED	1	New Year Day
SUN	12	National Youth Day
WED	15	Army Day
SUN	26	Republic Day
SUN	26	International Customs Day
THU	30	Martyrs' day

Wednesday Activities are for Level-II to Class-II

Tuesday Activities are for Classes III to V

Thursday Activities are for Classes VI to VIII

Friday Activities are for Classes IX to XII

Sports Activities (Matches) will be organised on monthly basis

Please Note : Holidays are subject to change as per Govt. notifications.

SAT	1	FOND REVERIE
SUN	2	HOLIDAY
MON	3	TD
TUE	4	TD - PREPSTERS' DAY PRACTICE BEGINS
WED	5	TD - GRADUATION DAY PRACTICE BEGINS
THU	6	TD - INTER-HOUSE BASKETBALL MATCH
FRI	7	TD - INTER-HOUSE BASKETBALL MATCH
SAT	8	TD - PREPSTERS' SPORTS DAY
SUN	9	HOLIDAY
MON	10	TD
TUE	11	TD
WED	12	TD
THU	13	TD
FRI	14	TD
SAT	15	REMEDIAL TEACHING
SUN	16	HOLIDAY
MON	17	TD
TUE	18	TD
WED	19	TD
THU	20	TD
FRI	21	TD
SAT	22	FOURTH SATURDAY - HOLIDAY
SUN	23	HOLIDAY
MON	24	TD - FINAL EXAMINATION COMMENCES
TUE	25	TD
WED	26	HOLIDAY - MAHASHIVRATRI
THU	27	TD
FRI	28	TD

Working Days 22

NATIONAL & INTERNATIONAL DAYS

SAT	1	Indian Coast Guard Day
MON	24	Central Excise Day
FRI	28	National Science Day

Wednesday Activities are for Level-II to Class-II

Tuesday Activities are for Classes III to V

Thursday Activities are for Classes VI to VIII

Friday Activities are for Classes IX to XII

Sports Activities (Matches) will be organised on monthly basis

Please Note : Holidays are subject to change as per Govt. notifications.

SAT	1	REMEDIAL TEACHING
SUN	2	HOLIDAY
MON	3	TD
TUE	4	TD
WED	5	TD
THU	6	TD
FRI	7	TD
SAT	8	SECOND SATURDAY - HOLIDAY
SUN	9	HOLIDAY
MON	10	TD
TUE	11	TD
WED	12	TD
THU	13	TD
FRI	14	HOLIDAY - HOLI
SAT	15	GRADUATION DAY
SUN	16	HOLIDAY
MON	17	ORIENTATION FOR NEW PARENTS
TUE	18	TD - SCHOOL BEGINS FOR CLASS X AND XII
WED	19	TD
THU	20	TD
FRI	21	TD
SAT	22	FOCUS ON ACHIEVEMENT - PTM 5
SUN	23	HOLIDAY
MON	24	INTRODUCTION SESSION FOR NEW STUDENTS
TUE	25	TD
WED	26	TD
THU	27	TD
FRI	28	TD
SAT	29	HOLIDAY
SUN	30	HOLIDAY
MON	31	EID UL FITR

Working Days 22

NATIONAL & INTERNATIONAL DAYS

MON	4	National Safety Day
FRI	8	International Women's Day
SUN	10	Ramakrishna Paramahansa's Birthday
MON	18	World Disabled Day
THU	21	World Forestry day
THU	21	Elimination of Racial / Discrimination Day
FRI	22	World Water Day

Wednesday Activities are for Level-II to Class-II

Tuesday Activities are for Classes III to V

Thursday Activities are for Classes VI to VIII

Friday Activities are for Classes IX to XII

Sports Activities (Matches) will be organised on monthly basis

Please Note : Holidays are subject to change as per Govt. notifications.

BGS INTERNATIONAL PUBLIC SCHOOL

Sector-5, Dwarka, New Delhi-110075

Tel.: 011-45629822 | 45629833 | 45622601

E-mail : bgsips2003@yahoo.com

Web site : www.bgsips.net